

مشخصات کلی موتورهای پله ای سری CY (استپر موتور دوفاز)

سایز Size	42	57	60	86
Step Angle (مقدار درجه)	1.8°			
Step Angle Accuracy (دقت درجه)	5%(-/+) full step , No load			
Resistance Accuracy (دقت پایداری)	10%(-/+)			
Inductance Accuracy (دقت ضریب القا)	20%(-/+)			
Temperature Rise (حد دما)	80°C Max. (rated current, 2Phase on)			
Ambient Temperature (بازه دمای محیطی)	-20°C ~ +50°C			
Insulation Resistance (عایق حفاظتی)	100M Ω min.,500VDC			
Dielectric Strength (توان دی الکتریک)	500VAC for one minute			
Shaft radial play (شعاعی)	0.02Max. (450 g-load)			
Shaft axial play (محوری)	0.08Max. (450 g-load)			
Max. radial force (20 mm from the flange) (شعاعی)	28N	75N	75N	220N
Max. axial force <sub>N</sub> (محوری)	10N	15N	15N	60N

مشخصات فنی موتورهای پله ای سری CY  
(manufactured for Af)

مدل Model	گشتاور Hold.Torque (N.m)	جریان فاز Current /Ph (A)	ولتاژ Rated Vol.(V)	مقاومت/فاز Res./Ph Ω	اینرسی روتور Rotor inertia (gcm <sup>2</sup> )	اندوکتانس فاز Induct./Ph (mH)	وزن Weight (Kg)	فلنج Flange (mm)	طول موتور Length L (mm)	قطر شفت Dia. D (mm)	تعداد سیم Leads
CY4260A.54.AF	0.6	1.2	3.3	2.75	102	6.4	0.5	42	60	5 (D-cut)	4
CY5765A.68.AF	1.5	3	1.3	0.42	400	1.06	1.08	57	65	6.35 (D-cut)	8
CY5776A.88.AF	1.8	3	1.7	0.55	480	1.78	1.2	57	76	8 (D-cut)	8
CY5776A.108.AF	1.8	3	1.7	0.55	480	1.78	1.2	57	76	10 (D-cut)	8
CY5784A.88.AF	2.1	3	1.9	0.62	530	2.3	1.25	57	84	8 (D-cut)	8
CY5784A.108.AF	2.1	3	1.9	0.62	530	2.3	1.25	57	84	10 (D-cut)	8
CY57112A.88.AF	2.6	3	2.5	0.83	800	3.5	1.75	57	112	8 (D-cut)	8
CY6065A.88.AF	2.1	3	2	0.65	570	1.6	1.0	60	65	8 (D-cut)	8
CY6084A.88.AF	3.1	3	1.9	0.63	840	1.8	1.29	60	84	8 (D-cut)	8
CY8680A.148.AF	4.5	4.4	4	0.9	1400	3	2.5	86	80	14 (key-way)	8
CY8698A.148.AF	7.5	4.4	4.4	1.0	2100	4.3	3.4	86	98	14 (key-way)	8
CY86118A.148.AF	8.5	6	6	1.3	2700	6.4	4.1	86	118	14 (key-way)	8
CY86128A.148.AF	10	6	6.5	1.4	3200	7.3	4.5	86	128	14 (key-way)	8
CY86150A.148.AF	12	6	7.5	1.65	4000	9.7	5.4	86	150	14 (key-way)	8
CY86156A.148.AF	12.5	6	6.5	1.4	4000	9	5.8	86	156	14 (key-way)	8

توجه: مشخصات، جداول، اشکال و تمام اطلاعات مندرج در این راهنما، انحصاراً در اختیار ارائه دهنده محصول بوده و بدون اطلاع قبلی، قابل تغییر می باشد.

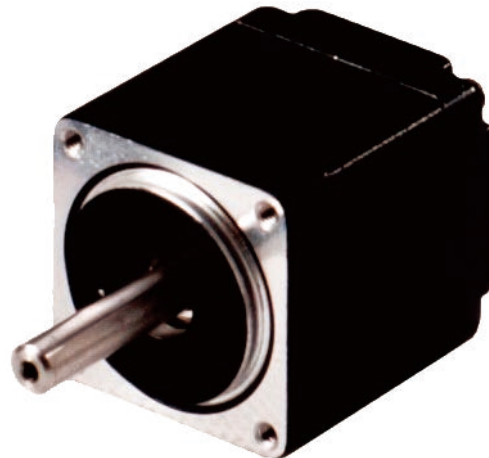
توجه: مشخصات، جداول، اشکال و تمام اطلاعات مندرج در این برگه، انحصاراً در اختیار ارائه دهنده محصول بوده و بدون اطلاع قبلی، قابل تغییر می باشد.

This manual may modify, when necessary because of improvement of the product, modification, or changes in specification, this manual is subject to change without notice.

# CY28xxA

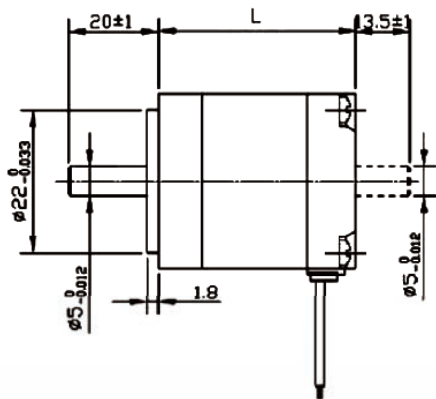
## 2-Phase Open-loop Stepper Motor

Item	Specifications
Step Angle	1.8°
Step Angle Accuracy	±5% (full step, no load)
Resistance Accuracy	±10%
Inductance Accuracy	±20%
Temperature Rise	80°C Max. (rated current, 2 phase on)
Ambient Temperature	-20°C~+50°C
Insulation Resistance	100MΩMin., 500VDC
Dielectric Strength	500VAC for one minute
Shaft Radial Play	0.02Max. (450 g-load)
Shaft Axial Play	0.08Max. (450 g-load)
Max. Radial Force	28N (20mm from the flange)
Max. Axial Force	10N

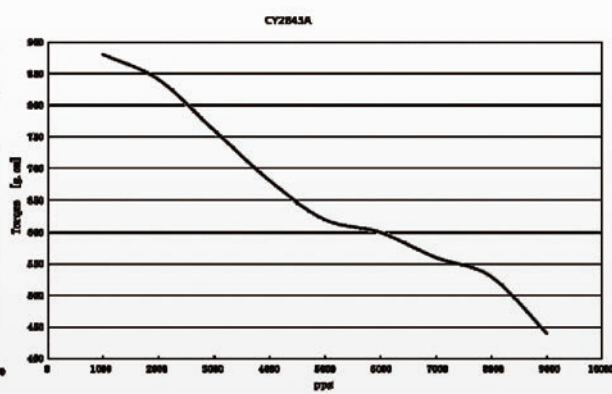
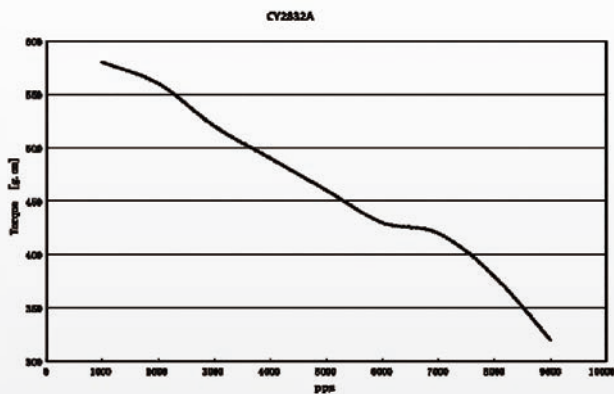
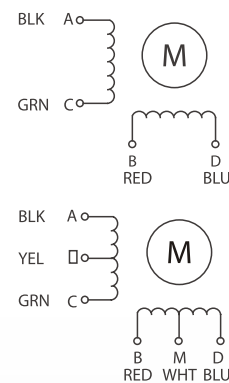


Model	Rated Voltage (V)	Current/Phase (A)	Resistance/Phase (Ω)	Inductance/Phase (mH)	Holding Torque (Nxm)	Rotor Inertia (gcm <sup>2</sup> )	Weight (Kg)	Length (mm)	Driver Model
CY2832A	4	0.67	5.6	3.4	0.059	8	0.11	32	DVS542/245
CY2845A	4.5	0.67	6.8	4.9	0.093	12	0.14	45	

اعداد مندرج در این اشکال بر حسب میلیمتر (mm) و وزن گیربکس بر مبنای کیلوگرم (Kg) می باشد.



unit: mm



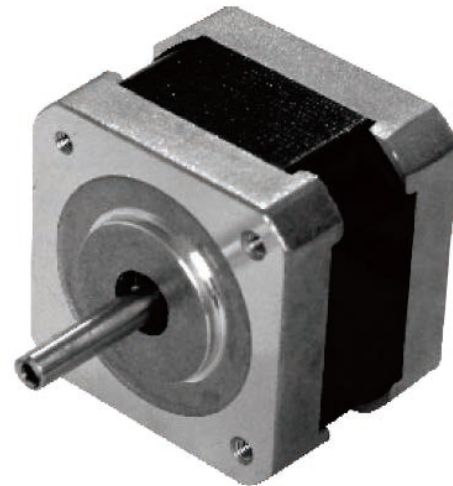
## CY28xxA

مشخصات فنی و ابعاد و اندازه استپرموتورهای سری CY42-NEMA17  
(manufactured for Af)

# CY42xxA

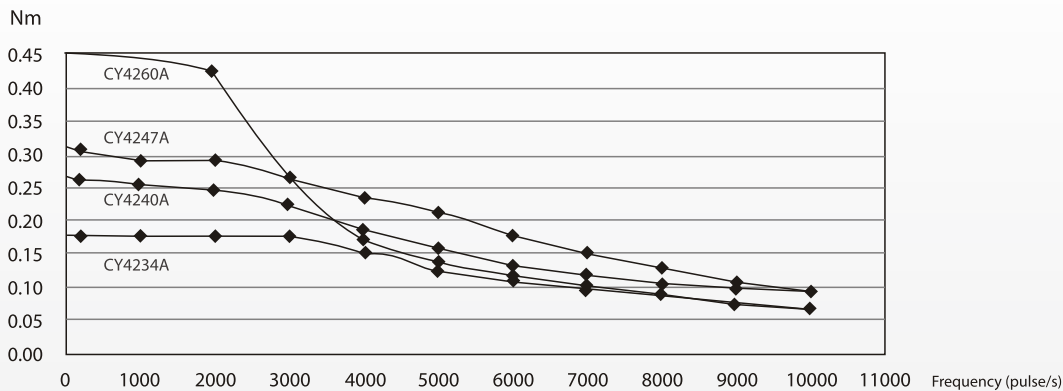
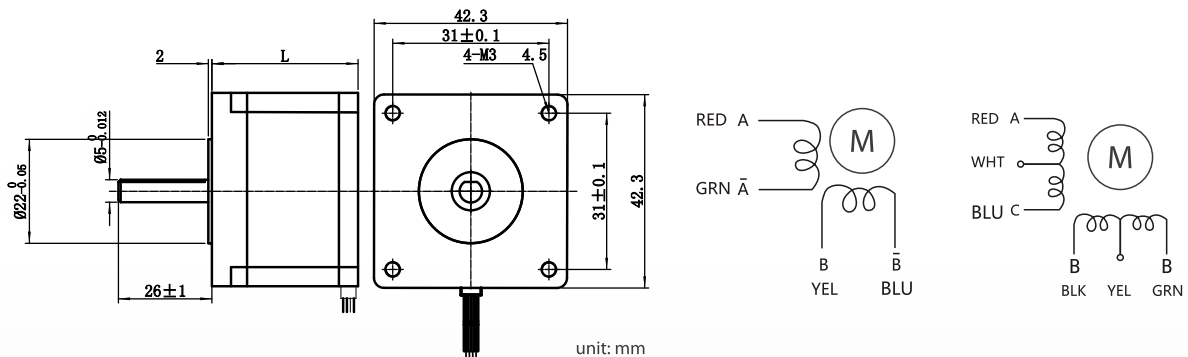
## 2-Phase Open-loop Stepper Motor

Item	Specifications
Step Angle	1.8°
Step Angle Accuracy	±5% (full step, no load)
Resistance Accuracy	±10%
Inductance Accuracy	±20%
Temperature Rise	80°C Max. (rated current, 2 phase on)
Ambient Temperature	-20°C~+50°C
Insulation Resistance	100MΩMin., 500VDC
Dielectric Strength	500VAC for one minute
Shaft Radial Play	0.02Max. (450 g-load)
Shaft Axial Play	0.08Max. (450 g-load)
Max. Radial Force	28N (20mm from the flange)
Max. Axial Force	10N



Model	Rated Voltage (V)	Current/Phase (A)	Resistance/Phase (Ω)	Inductance/Phase (mH)	Holding Torque (Nxm)	Rotor Inertia (gcm <sup>2</sup> )	Weight (Kg)	Length (mm)	Driver Model
CY4234A	2.76	1.2	2.3	2.5	0.21	35	0.22	34	DVS542/245
CY4240A	2	1.2	1.67	3.7	0.3	54	0.3	40	
CY4247A	2.02	1.2	1.69	2.6	0.4	68	0.38	47	
CY4260A	3.3	1.2	2.75	6.4	0.6	102	0.5	60	

اعداد مندرج در این اشکال بر حسب میلیمتر (mm) و وزن گیربکس بر مبنای کیلوگرم (Kg) می باشند.



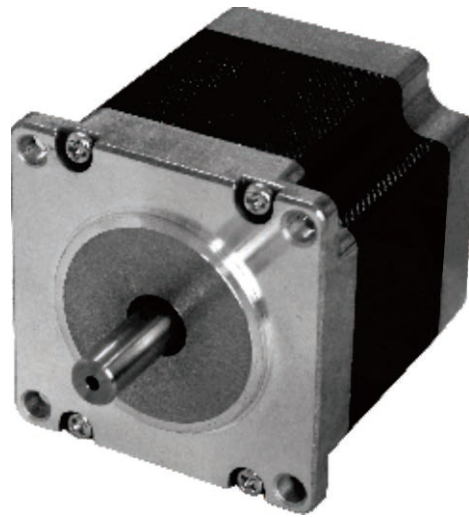
## CY42xxA

مشخصات فنی و ابعاد و اندازه استپر موتورهای سری CY57-NEMA23  
(manufactured for Af)

# CY57xxA

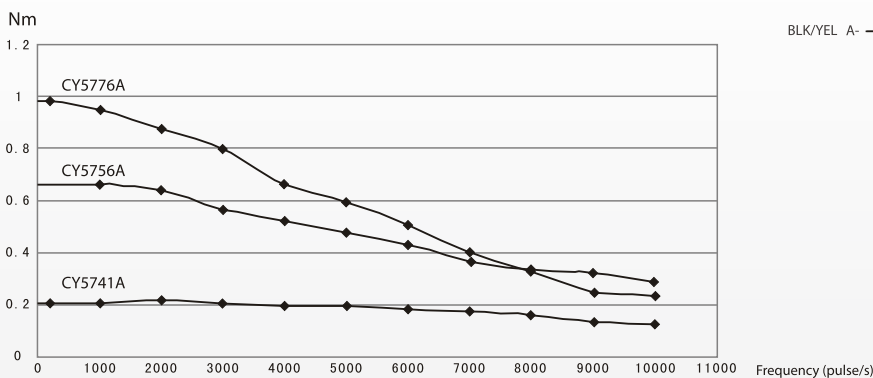
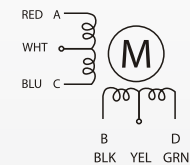
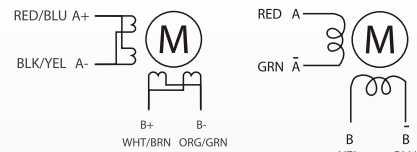
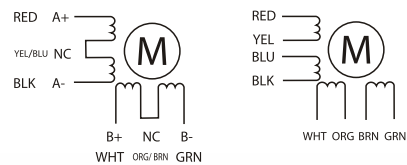
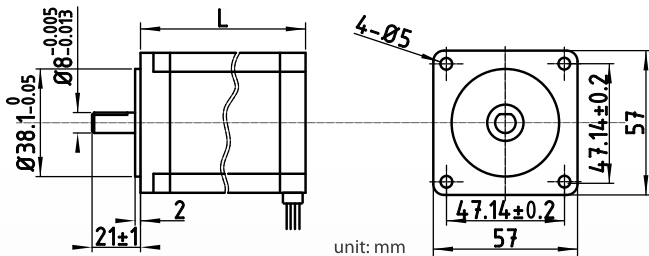
## 2-Phase Open-loop Stepper Motor

Item	Specifications
Step Angle	1.8°
Step Angle Accuracy	±5% (full step, no load)
Resistance Accuracy	±10%
Inductance Accuracy	±20%
Temperature Rise	80°C Max. (rated current, 2 phase on)
Ambient Temperature	-20°C~+50°C
Insulation Resistance	100MΩMin., 500VDC
Dielectric Strength	500VAC for one minute
Shaft Radial Play	0.02Max. (450 g-load)
Shaft Axial Play	0.08Max. (450 g-load)
Max. Radial Force	75N (20mm from the flange)
Max. Axial Force	15N



Model	Rated Voltage (V)	Current/Phase (A)	Resistance/Phase (Ω)	Inductance/Phase (mH)	Holding Torque (Nxm)	Rotor Inertia (gcm <sup>2</sup> )	Weight (Kg)	Length (mm)	Driver Model
CY5741A	1.8	2	0.89	1.7	0.6	120	0.5	41	DVS542/ 245/268
CY5756A	1.2	3	0.39	1.13	1.0	300	0.68	56	
CY5765A	1.3	3	0.42	1.06	1.5	400	1.08	65	
CY5776A	1.7	3	0.55	1.78	1.8	480	1.2	76	
CY5784A	1.9	3	0.62	2.3	2.1	530	1.25	84	
CY57102A	2.3	3	0.75	2.9	2.4	700	1.58	102	
CY57112A	2.5	3	0.83	3.5	2.6	800	1.78	112	

اعداد مندرج در این اشکال بر حسب میلیمتر (mm) و وزن گریبس بر مبنای کیلوگرم (Kg) می باشند.



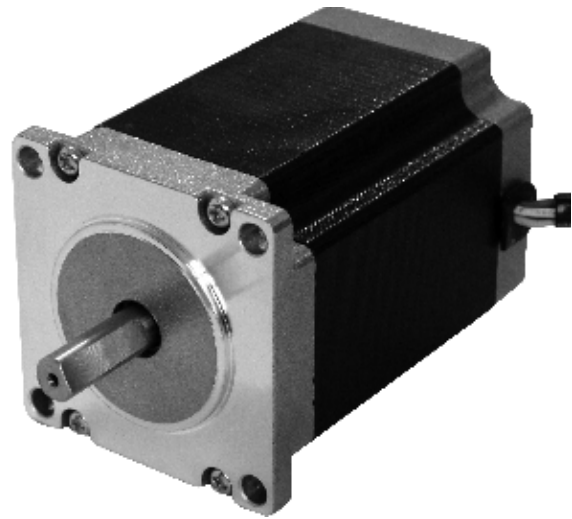
## CY57xxA

مشخصات فنی و ابعاد و اندازه استپرموتورهای سری CY60-NEMA24  
(manufactured for Af)

# CY60xxA

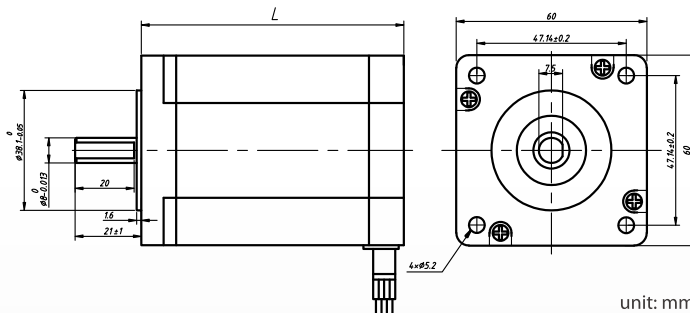
2-Phase Open-loop Stepper Motor

Item	Specifications
Step Angle	1.8°
Step Angle Accuracy	±5% (full step, no load)
Resistance Accuracy	±10%
Inductance Accuracy	±20%
Temperature Rise	80°C Max. (rated current, 2 phase on)
Ambient Temperature	-20°C~+50°C
Insulation Resistance	100MΩMin., 500VDC
Dielectric Strength	500VAC for one minute
Shaft Radial Play	0.02Max. (450 g-load)
Shaft Axial Play	0.08Max. (450 g-load)
Max. Radial Force	75N (20mm from the flange)
Max. Axial Force	15N

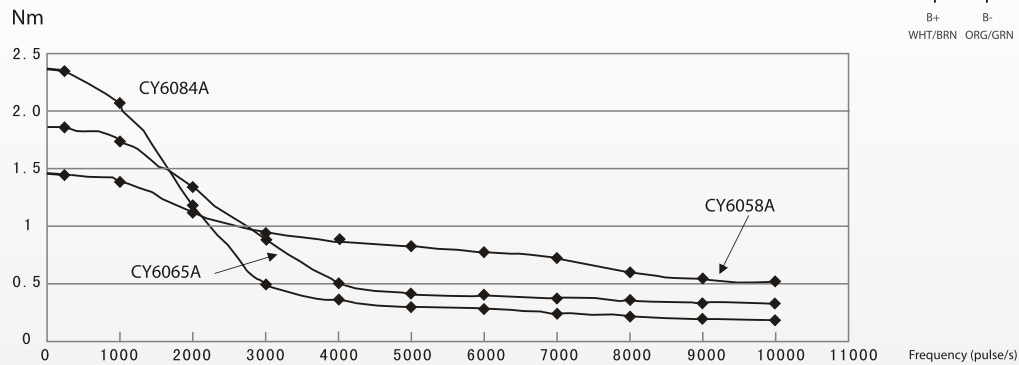
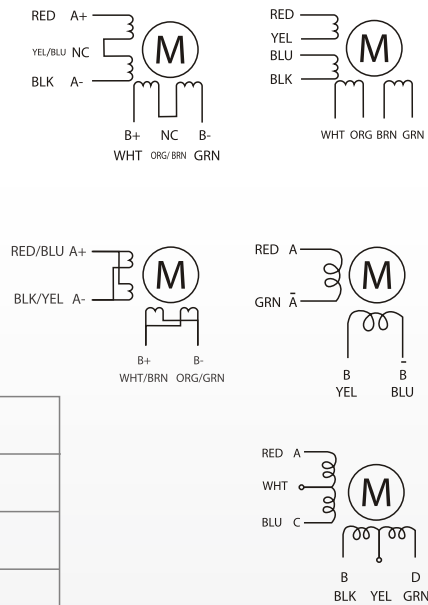


Model	Rated Voltage (V)	Current/Phase (A)	Resistance/Phase (Ω)	Inductance/Phase (mH)	Holding Torque (Nxm)	Rotor Inertia (gcm <sup>2</sup> )	Weight (Kg)	Length (mm)	Driver Model
CY6058A	1.3	3	0.42	2.65	1.6	300	0.85	58	DVS542/245/268
CY6065A	2	3	0.65	1.6	2.1	570	1.0	65	
CY6078A	1.5	3	0.5	1.66	2.5	620	1.1	78	
CY6084A	1.9	3	0.63	1.8	3.1	840	1.29	84	
CY60102A	2.3	3	0.75	2.4	3.5	1000	1.65	102	
CY60112A	4.6	3	1.56	3.9	3.8	1200	1.807	112	

اعداد مندرج در این اشکال بر حسب میلیمتر (mm) و وزن گریبس بر مبنای کیلوگرم (Kg) می باشند.



unit: mm



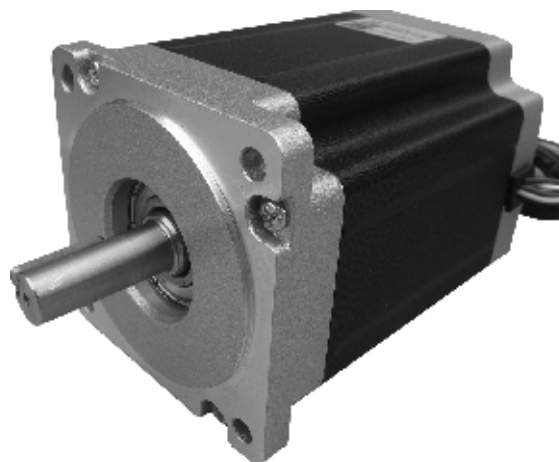
## CY60xxA

مشخصات فنی و ابعاد و اندازه استپر موتورهای سری CY86-NEMA34  
(manufactured for Af)

# CY86xxA

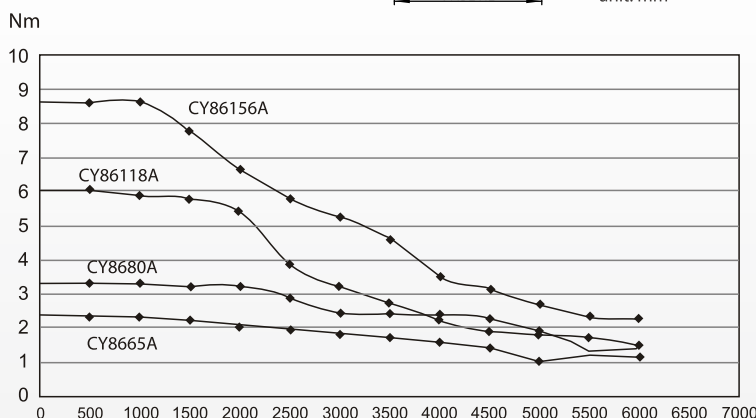
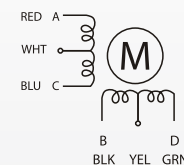
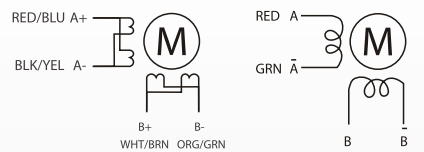
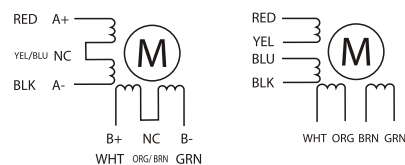
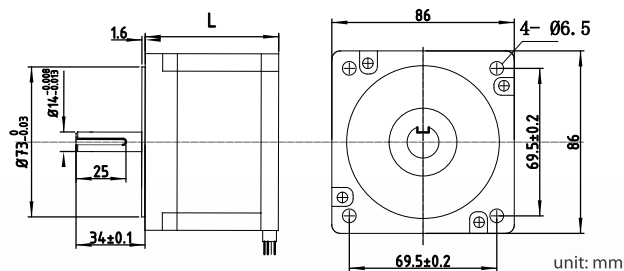
## 2-Phase Open-loop Stepper Motor

Item	Specifications
Step Angle	1.8°
Step Angle Accuracy	±5% (full step, no load)
Resistance Accuracy	±10%
Inductance Accuracy	±20%
Temperature Rise	80°C Max. (rated current, 2 phase on)
Ambient Temperature	-20°C~+50°C
Insulation Resistance	100MΩMin., 500VDC
Dielectric Strength	500VAC for one minute
Shaft Radial Play	0.02Max. (450 g-load)
Shaft Axial Play	0.08Max. (450 g-load)
Max. Radial Force	220N (20mm from the flange)
Max. Axial Force	60N



Model	Rated Voltage (V)	Current/Phase (A)	Resistance/Phase (Ω)	Inductance/Phase (mH)	Holding Torque (Nxm)	Rotor Inertia (gcm <sup>2</sup> )	Weight (Kg)	Length (mm)	Driver Model
CY8665A	4	3	1.3	3.3	3.3	1000	2.0	65	DVS860/ 268/278
CY8680A	4	4.4	0.9	3	4.5	1400	2.5	80	
CY8698A	4.4	4.4	1.0	4.3	7.5	2100	3.4	98	
CY86118A	6	6	1.3	6.4	8.5	2700	4.1	118	
CY86128A	6.5	6	1.4	7.3	10	3200	4.5	128	
CY86150A	7.5	6	1.65	9.7	12	4000	5.4	150	
CY86156A	6.5	6	1.4	9	12.5	4000	5.8	156	

اعداد مندرج در این اشکال بر حسب میلیمتر (mm) و وزن گیربکس بر مبنای کیلوگرم (Kg) می باشد.



Frequency (pulse/s)

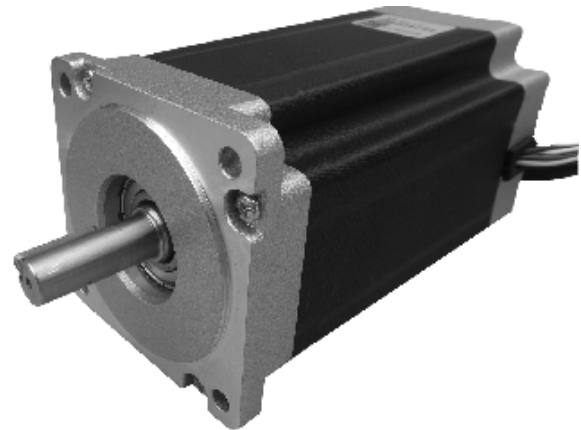
## CY86xxA

مشخصات فنی و ابعاد و اندازه استپرموتورهای سری CY110-NEMA42  
(manufactured for Af)

# CY110xxA

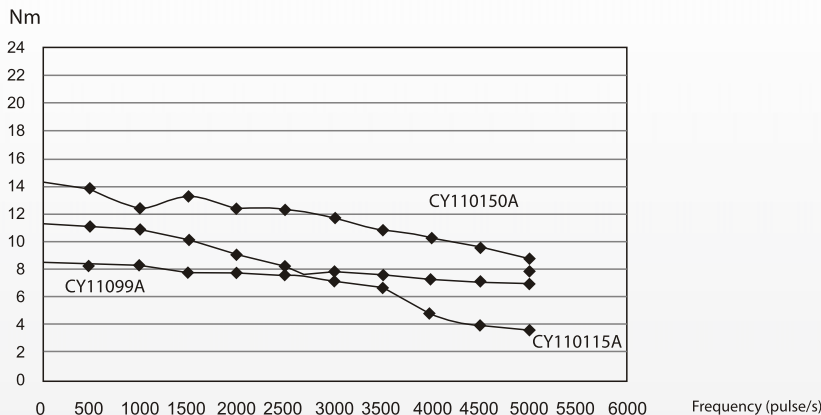
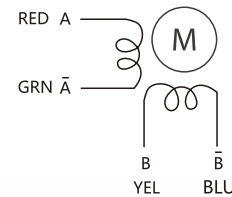
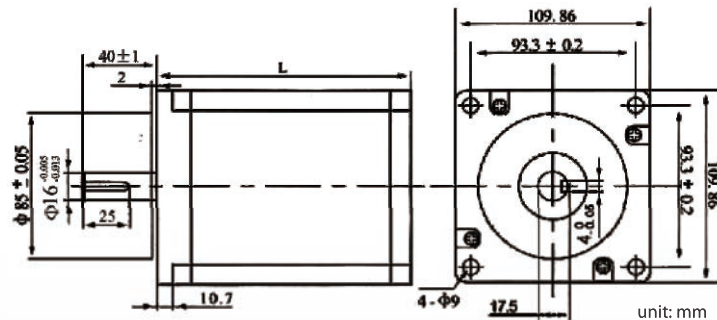
## 2-Phase Open-loop Stepper Motor

Item	Specifications
Step Angle	1.8°
Step Angle Accuracy	±5% (full step, no load)
Resistance Accuracy	±10%
Inductance Accuracy	±20%
Temperature Rise	80°C Max. (rated current, 2 phase on)
Ambient Temperature	-20°C~+50°C
Insulation Resistance	100MΩMin., 500VDC
Dielectric Strength	1800VAC, 1s, 5mA
Shaft Radial Play	0.02Max. (450 g-load)
Shaft Axial Play	0.08Max. (450 g-load)
Max. Radial Force	220N (20mm from the flange)
Max. Axial Force	60N



Model	Current/Phase (A)	Resistance/Phase (Ω)	Inductance/Phase (mH)	Holding Torque (N×m)	Rotor Inertia (gcm <sup>2</sup> )	Weight (Kg)	Length (mm)	Driver Model
CY11099A	5.5	0.45	7.5	9	5500	5.5	99	DVS2811
CY110115A	6	0.5	8.4	12	7200	6.6	115	
CY110150A	6.5	0.7	15.5	18	10900	8.6	150	
CY110165A	6.5	0.75	21	22	13000	9.9	165	
CY110201A	8	1.0	24	30	16200	12.3	201	

اعداد مندرج در این اشکال بر حسب میلیمتر (mm) و وزن تئوریک بر مبنای کیلوگرم (Kg) می باشند.



## CY110xxA