

# مشخصات فنی و ابعاد و اندازه الکتروموتورهای چینی سه فاز پوسته چدن (سری Y)

# Y

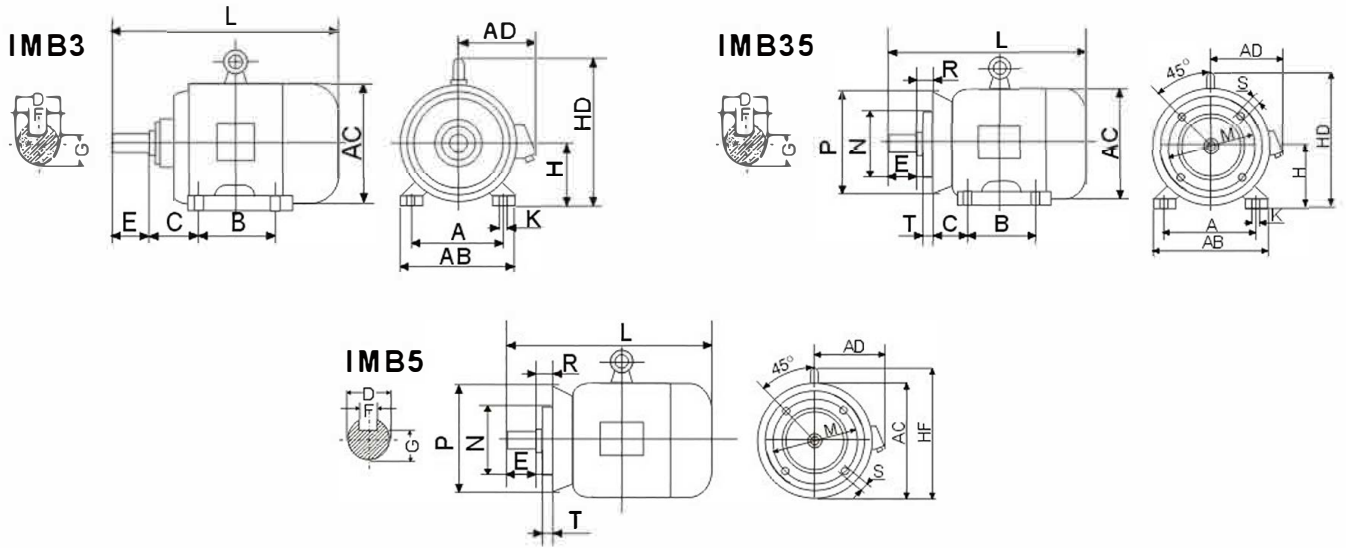
**SERIES THREE-PHASE  
ASYNCHRONOUS  
MOTOR**

CE



توجه: با توجه به تنوع برند و تغییر طراحی جزئی در آن ها ، امکان وجود تفاوت جزئی در بعضی از اعداد ارائه شده وجود دارد

توجه: با توجه به تنوع برند و تغییر طراحی جزئی در آن ها ، امکان وجود تفاوت جزئی در بعضی از اعداد ارائه شده وجود دارد



## INSTALLATION DIMENSIONS

Frame Size	Mounting Dimensions (mm)																Frame Dimensions (mm)									
	A	B	C	D		E		F		G	H	K	M	N	P	R	S	T	AB	AC	AD	HD	L			
				2P	4,6,8,10P	2P	4,6,8,10P	2P	4,6,8,10P	2P	4,6,8,10P											2P	4,6,8,10P			
80	125	100	50	19	40	6	15.5	80	10	165	130	200	0	12	3.5	165	175	150		285						
90S	140	100	56	24	50	8	20	90	10	165	130	200	0	12	3.5	180	195	160	-	311						
90L	140	125	56	24	50	8	20	90	10	165	130	200	0	12	3.5	180	195	160	-	335						
100L	160	140	63	28	60	8	24	100	12	215	180	250	0	15	4	205	215	180	245	380						
112M	190	140	70	28	60	8	24	112	12	215	180	250	0	15	4	245	240	190	265	400						
132S	216	140	89	38	80	10	33	132	12	265	230	300	0	15	4	280	275	210	315	475						
132M	216	178	89	38	80	10	33	132	12	265	230	300	0	15	4	280	275	210	315	515						
160M	254	210	108	42	110	12	37	160	15	300	250	350	0	19	5	325	325	255	385	600						
160L	254	254	108	42	110	12	37	160	15	300	250	350	0	19	5	325	325	255	385	645						
180M	279	241	121	48	110	14	42.5	180	15	300	250	350	0	19	5	355	360	285	430	670						
180L	279	279	121	48	110	14	42.5	180	15	300	250	350	0	19	5	355	360	285	430	710						
200L	318	305	133	55	110	16	49	200	19	350	300	400	0	19	5	395	420	315	475	775						
225S	356	286	149	-	60	-	140	-	18	-	53	225	19	400	350	450	0	19	5	435	450	345	530	-	820	
225M	356	311	149	55	60	110	140	16	18	49	53	225	19	400	350	450	0	19	5	435	450	345	530	815	845	
250M	406	349	168	60	65	140	18	53	58	250	24	500	450	550	0	19	5	490	515	385	575	930				
280S	457	368	190	65	75	140	18	20	58	67.5	280	24	500	450	550	0	19	5	550	585	410	640	1100			
280M	457	419	190	65	75	140	18	20	58	67.5	280	24	500	450	550	0	19	5	550	585	410	640	1050			
315S	508	406	216	65	80	140	170	18	22	58	71	315	28	600	550	660	0	24	6	744	645	576	865	1270		
315M	508	457	216	65	80	140	170	18	22	58	71	315	28	600	550	660	0	24	6	744	645	576	865	1340		
315L	508	508	216	65	80	140	170	18	22	58	71	315	28	600	550	660	0	24	6	744	645	576	865	1340		
355M	610	560	254	75	95	140	170	20	25	67.5	86	355	28	740	680	800	0	24	6	730	750	680	860	1515	1545	
355L	610	630	254	75	95	140	170	20	25	67.5	86	355	28	740	680	800	0	24	6	730	750	680	860	1515	1545	

اعداد مندرج، بر حسب میلیمتر (mm) می باشد

# ABLE MOTORS

توجه: با توجه به تنوع برند و تغییر طراحی جزئی در آن ها ، امکان وجود تفاوت جزئی در بعضی از اعداد ارائه شده وجود دارد

## TECHNICAL DATA

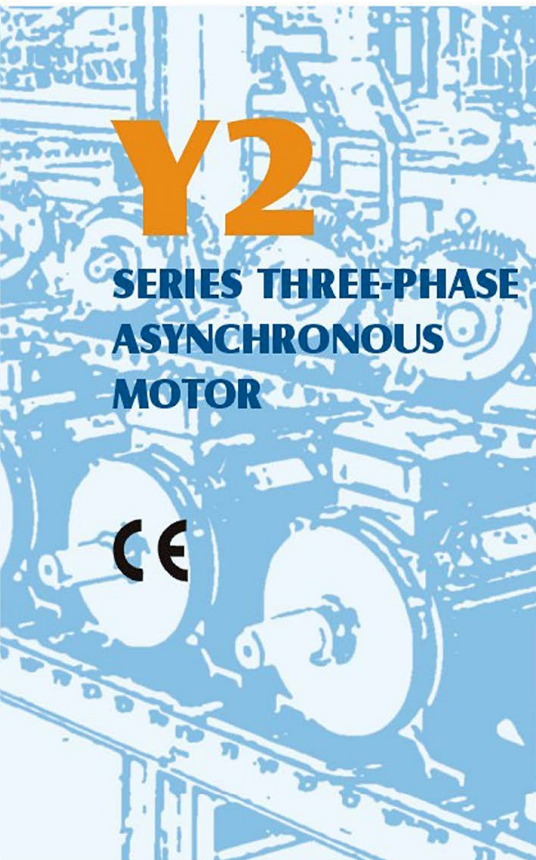
Model	Rated Output		Full Load				Ist/IN Locked current	Tst/TN Locked torque	TM/IN max torque	Net weight (B3) Kg
	kW	HP	Speed (r.p.m)	Current (A)	Eff. (%)	Power factor (cos)	Rated current	Rated current	Rated current	
380V 50Hz synchronous Speed 3000r/min (2 Poles)										
Y-801-2	0.75	1	2830	1.81	75	0.84	6.5	2.2	2.3	17
Y-802-2	1.1	1.5	2830	2.52	77	0.86	7.0	2.2	2.3	18
Y-90S-2	1.5	2	2840	3.44	78	0.85	7.0	2.2	2.3	22
Y-90L-2	2.2	3	2840	4.83	80.5	0.86	7.0	2.2	2.3	26
Y-100L-2	3	4	2870	6.39	82	0.87	7.0	2.2	2.3	35
Y-112M-2	4	5.5	2890	8.17	85.5	0.88	7.0	2.2	2.3	45
Y-132S1-2	5.5	7.5	2900	11.1	85.5	0.88	7.0	2.0	2.3	67
Y-132S2-2	7.5	10	2900	15.0	86.2	0.88	7.0	2.0	2.3	71
Y-160M1-2	11	15	2930	21.8	87.2	0.88	7.0	2.0	2.3	118
Y-160M2-2	15	20	2930	29.4	88.2	0.89	7.0	2.0	2.3	130
Y-160L-2	18.5	25	2930	35.5	89	0.89	7.0	2.0	2.2	150
Y-180M-2	22	30	2940	42.2	89	0.89	7.0	2.0	2.2	175
Y-200L1-2	30	40	2950	56.9	90	0.89	7.0	2.0	2.2	227
Y-200L2-2	37	50	2950	69.8	90.5	0.89	7.0	2.0	2.2	255
Y-225M-2	45	60	2970	83.9	91.5	0.89	7.0	2.0	2.2	320
Y-250M-2	55	75	2970	103	91.5	0.89	7.0	2.0	2.2	389
Y-280S-2	75	100	2970	139	92	0.89	7.0	2.0	2.2	520
Y-280M-2	90	125	2970	166	92.5	0.89	7.0	2.0	2.2	577
Y-315S-2	110	150	2980	203	92.5	0.89	6.8	1.8	2.2	980
Y-315M-2	132	180	2980	242	93	0.89	6.8	1.8	2.2	1080
Y-315L1-2	160	220	2980	292	93.5	0.89	6.8	1.8	2.2	1160
Y-315L2-2	200	270	2980	365	93.5	0.89	6.8	1.8	2.2	1210
Y-355M-2	250	340	2980	444	94.5	0.90	7.0	1.2	2.2	1760
Y-355L-2	315	430	2980	556	95	0.90	7.1	1.2	2.2	1900
380V 50Hz synchronous Speed 1500r/min (4 Poles)										
Y-801-4	0.55	0.75	1390	1.51	73	0.76	6.0	2.4	2.3	17
Y-802-4	0.75	1	1390	2.01	74.5	0.76	6.0	2.3	2.3	18
Y-90S-4	1.1	1.5	1400	2.75	78	0.78	6.5	2.3	2.3	23
Y-90L-4	1.5	2	1400	3.65	79	0.79	6.5	2.3	2.3	27
Y-100L1-4	2.2	3	1430	5.03	81	0.82	7.0	2.2	2.3	35
Y-100L2-4	3	4	1430	6.82	82.5	0.81	7.0	2.2	2.3	38
Y-112M-4	4	5.5	1440	8.77	84.5	0.82	7.0	2.2	2.3	49
Y-132S-4	5.5	7.5	1440	11.6	85.5	0.84	7.0	2.2	2.3	67
Y-132M-4	7.5	10	1440	15.4	87	0.85	7.0	2.2	2.3	80
Y-160M-4	11	15	1460	22.6	88	0.84	7.0	2.2	2.3	124
Y-160L-4	15	20	1460	30.3	88.5	0.85	7.0	2.2	2.3	147
Y-180M-4	18.5	25	1470	35.9	91	0.86	7.0	2.0	2.2	169
Y-180L-4	22	30	1470	42.5	91.5	0.86	7.0	2.0	2.2	184
Y-200L-4	30	40	1470	56.8	92.2	0.87	7.0	2.0	2.2	241
Y-225S-4	37	50	1480	70.4	91.8	0.87	7.0	1.9	2.2	300
Y-225M-4	45	60	1480	84.2	92.3	0.88	7.0	1.9	2.2	330
Y-250M-4	55	75	1480	103	92.6	0.88	7.0	2.0	2.2	400
Y-280S-4	75	100	1480	140	92.7	0.88	7.0	1.9	2.2	546
Y-280M-4	90	125	1480	164	93.5	0.89	6.8	1.9	2.2	620
Y-315S-4	110	150	1480	201	93.5	0.89	6.8	1.8	2.2	1000
Y-315M-4	132	180	1490	240	94	0.89	6.8	1.8	2.2	1100
Y-315L1-4	160	220	1490	289	94.5	0.89	6.8	1.8	2.2	1140
Y-315L2-4	200	270	1490	361	94.5	0.89	6.8	1.8	2.2	1190
Y-355M-4	250	340	1485	459	94.7	0.87	6.8	1.4	2.2	1800
Y-355L-4	315	430	1485	576	95.2	0.87	6.8	1.4	2.2	1940

توجه: با توجه به تنوع برند و تغییر طراحی جزئی در آن ها ، امکان وجود تفاوت جزئی در بعضی از اعداد ارائه شده وجود دارد

## TECHNICAL DATA

Model	Rated Output		Full Load				Ist/IN Locked current	Ts/IN Locked torque	TM/IN max torque	Net weight (B3) Kg
	kW	HP	Speed (r.p.m)	Current (A)	Eff. (%)	Power factor (cos)	Rated current	Rated current	Rated current	
<b>380V 50Hz synchronous Speed 1000r/min (6Poles)</b>										
Y-90S-6	0.75	1	910	2.25	72.5	0.70	5.5	2.0	2.2	23
Y-90L-6	1.1	1.5	910	3.16	73.5	0.72	5.5	2.0	2.2	25
Y-100L-6	1.5	2	940	3.97	77.5	0.74	6.0	2.0	2.2	33
Y-112M-6	2.2	3	940	5.61	80.5	0.74	6.0	2.0	2.2	45
Y-132S-6	3.0	4	960	7.23	83	0.76	6.5	2.0	2.2	63
Y-132M1-6	4.0	5.5	960	9.40	84	0.77	6.5	2.0	2.2	73
Y-132M2-6	5.5	7.5	960	12.6	85.3	0.78	6.5	2.0	2.2	84
Y-160M	7.5	10	970	17.0	86	0.78	6.5	2.0	2.0	119
Y-160L-6	11.0	15	970	24.6	87	0.78	6.5	2.0	2.0	147
Y-180L-6	15.0	20	970	31.4	89.5	0.81	6.5	1.8	2.0	181
Y-200L1-6	18.5	25	970	37.7	89.8	0.83	6.5	1.8	2.0	215
Y-200L2-6	22.0	30	970	44.6	90.2	0.83	6.5	1.8	2.0	235
Y-225M-6	30.0	40	980	59.5	90.2	0.85	6.5	1.7	2.0	294
Y-250M-6	37.0	50	980	72	90.8	0.86	6.5	1.8	2.0	390
Y-280S-6	45.0	60	980	85.4	92	0.87	6.5	1.8	2.0	506
Y-280M-6	55	75	980	104	92	0.87	6.5	1.8	2.0	553
Y-315S-6	75	100	990	141	92.8	0.87	6.5	1.6	2.0	990
Y-315M-6	90	125	990	169	93.2	0.87	6.5	1.6	2.0	1080
Y-315L1-6	110	150	990	206	93.5	0.87	6.5	1.6	2.0	1150
Y-315L2-6	132	180	990	246	93.8	0.87	6.5	1.6	2.0	1210
Y-355M1-6	160	220	990	300	94.1	0.86	6.7	1.3	2.0	1620
Y-355M2-6	200	270	990	374	94.3	0.86	6.7	1.3	2.0	1750
Y-355L-6	250	340	990	465	94.7	0.86	6.7	1.3	2.0	1990
<b>380V 50Hz synchronous Speed 750r/min (8Poles)</b>										
Y-132S-8	2.2	3	710	5.85	80.5	0.71	5.5	2.0	2.0	63
Y-132M-8	3.0	4	710	7.72	82	0.72	5.5	2.0	2.0	79
Y-160M1-8	4.0	5.5	720	9.91	84	0.73	6.0	2.0	2.0	118
Y-160M2-4	5.5	7.5	720	13.3	85	0.74	6.0	2.0	2.0	119
Y-160L-8	7.5	10	720	17.7	86	0.75	5.5	2.0	2.0	145
Y-180L-8	11.0	15	730	24.8	87.5	0.77	6.0	1.7	2.0	172
Y-200L-8	15.0	20	730	34.1	88	0.76	6.0	1.8	2.0	220
Y-225S-8	18.5	25	730	41.3	89.5	0.76	6.0	1.7	2.0	263
Y-225M-8	22.0	30	730	47.6	90	0.78	6.0	1.8	2.0	292
Y-250M-8	30.0	40	740	63.0	90.5	0.80	6.0	1.8	2.0	390
Y-280S-8	37.0	50	740	78.2	91	0.79	6.0	1.8	2.0	508
Y-280M-4	45.0	60	740	93.2	91.7	0.80	6.0	1.8	2.0	533
Y-315S-8	55	75	740	114	92	0.80	6.5	1.6	2.0	1000
Y-315M-8	75	100	740	152	92.5	0.81	6.5	1.6	2.0	1100
Y-315L1-8	90	125	740	179	93	0.82	6.5	1.6	2.0	1160
Y-315L2-8	110	150	740	218	93.3	0.82	6.3	1.6	2.0	1230
Y-355M1-8	132	180	740	260	93.8	0.81	6.3	1.3	2.0	1700
Y-355M2-8	160	220	740	314	94.0	0.81	6.3	1.3	2.0	1780
Y-355L-8	200	270	740	392	94.3	0.81	6.3	1.3	2.0	2000
<b>380V 50Hz synchronous Speed 600 r/min (10Poles)</b>										
Y-315S-10	45	60	590	101	91.5	0.74	6.0	1.4	2.0	990
Y-315M-10	55	75	590	123	92	0.74	6.0	1.4	2.0	1150
Y-315L2-10	75	100	590	164	92.5	0.75	6.0	1.4	2.0	1220
Y-355M1-10	90	120	590	190	93	0.77	6.0	1.2	2.0	1530
Y-355M2-10	110	150	590	230	93.2	0.78	6.0	1.2	2.0	1640
Y-355L-10	132	180	590	275	93.5	0.78	6.0	1.2	2.0	1690

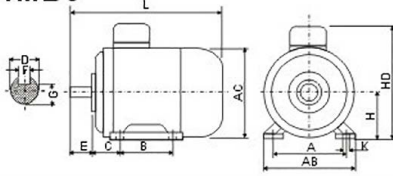
# مشخصات فنی و ابعاد و اندازه الکتروموتورهای چینی سه فاز پوسته چدن (سری Y2)



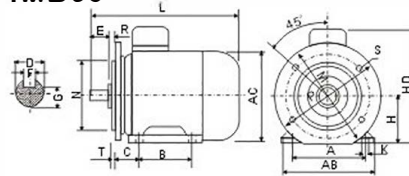
توجه: با توجه به تنوع برند و تغییر طراحی جزئی در آن ها ، امکان وجود تفاوت جزئی در بعضی از اعداد ارائه شده وجود دارد

توجه: با توجه به تنوع برند و تغییر طراحی جزئی در آن ها ، امکان وجود تفاوت جزئی در بعضی از اعداد ارائه شده وجود دارد

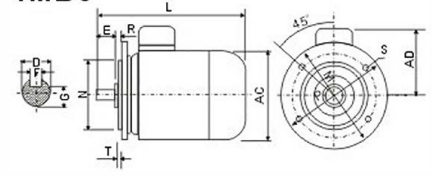
### IMB3



### IMB35



### IMB5



## INSTALLATION DIMENSIONS

Frame Size	Mounting Dimensions (mm)																Frame Dimensions (mm)								
	A	B	C	D		E		F		G		H	K	M	N	P	R	S	T	AB	AC	AD	HD	L	
				2P	4,6,8,10P	2P	4,6,8,10P	2P	4,6,8,10P	2P	4,6,8,10P												2P	4,6,8,10P	
63	100	80	40	11	23	4	8.5	63	7	115	95	140	0	10	3	135	130	70	180	230					
71	112	90	45	14	30	5	11	71	7	130	110	160	0	10	3	150	145	80	195	255					
80	125	100	50	19	40	6	15.5	80	10	165	130	200	0	12	3.5	165	175	145	220	295					
90S	140	100	56	24	50	8	20	90	10	165	130	200	0	12	3.5	180	195	155	250	320					
90L	140	125	56	24	50	8	20	90	10	165	130	200	0	12	3.5	180	195	155	250	345					
100L	160	140	63	28	60	8	24	100	12	215	180	250	0	15	4	205	215	180	270	385					
112M	190	140	70	28	60	8	24	112	12	215	180	250	0	15	4	230	240	190	300	400					
132S	216	140	89	38	80	10	33	132	12	265	230	300	0	15	4	270	275	210	345	470					
132M	216	178	89	38	80	10	33	132	12	265	230	300	0	15	4	270	275	210	345	510					
160M	254	210	108	42	110	12	37	160	15	300	250	350	0	19	5	320	330	255	420	615					
160L	254	254	108	42	110	12	37	160	15	300	250	350	0	19	5	320	330	255	420	670					
180M	279	241	121	48	110	14	42.5	180	15	300	250	350	0	19	5	355	380	280	455	700					
180L	279	279	121	48	110	14	42.5	180	15	300	250	350	0	19	5	355	380	280	455	740					
200L	318	305	133	55	110	16	49	200	19	350	300	400	0	19	5	395	420	305	505	770					
225S	356	286	149	60	140	18	53	225	19	400	350	450	0	19	5	435	470	335	560	820					
225M	356	311	149	55	110	16	49	225	19	400	350	450	0	19	5	435	470	335	560	815	845				
250M	406	349	168	60	140	18	53	250	24	500	450	550	0	19	5	490	510	370	615	910					
280S	457	368	190	65	140	18	58	280	24	500	450	550	0	19	5	550	580	410	680	985					
280M	457	419	190	65	140	18	58	280	24	500	450	550	0	19	5	550	580	410	680	1035					
315S	508	406	216	65	170	18	67.5	315	28	600	550	660	0	24	6	635	645	430	845	1185	1215				
315M	508	457	216	65	140	18	58	315	28	600	550	660	0	24	6	635	645	430	845	1295	1325				
315L	508	508	216	65	170	18	67.5	315	28	600	550	660	0	24	6	635	645	430	845	1295	1325				
355M	610	560	254	75	170	20	76.5	355	28	740	680	800	0	24	6	730	710	455	1010	1500	1530				
355L	610	630	254	75	170	20	76.5	355	28	740	680	800	0	24	6	730	710	455	1010	1500	1530				

اعداد مندرج، بر حسب میلیمتر (mm) می باشد

## TECHNICAL DATA

Model	Power (kW)	Current at 380V (A)	Speed (r.p.m)	Eff. (%)	Power Factor	Locked rotor torque Rated torque	Locked rotor current Rated current	Max torque Rated torque
Synchronous Speed 3000r/min (2 Poles) 50Hz								
Y2-631-2	0.18	0.52	2825	65	0.80	2.2	5.5	2.2
Y2-632-2	0.25	0.69	2840	68	0.81	2.2	5.1	2.2
Y2-711-2	0.37	0.99	2840	70	0.81	2.2	6.0	2.2
Y2-712-2	0.55	1.4	2880	73	0.82	2.2	6.0	2.2
Y2-801-2	0.75	1.8	2890	75	0.83	2.2	6.0	2.2
Y2-802-2	1.1	2.6	2900	77	0.84	2.2	7.0	2.2
Y2-90S-2	1.5	3.4	2900	79	0.84	2.2	7.0	2.2
Y2-90L-2	2.2	4.8	2930	81	0.85	2.2	7.0	2.2
Y2-100L-2	3.0	6.3	2930	83	0.87	2.2	7.0	2.2
Y2-112M-2	4.0	8.1	2930	85	0.88	2.2	8.0	2.2
Y2-132S1-2	5.5	11	2940	86	0.88	2.2	8.0	2.2
Y2-132S2-2	7.5	15	2950	87	0.88	2.2	8.0	2.2
Y2-160M1-2	11.0	21.3	2950	88	0.88	2.0	8.0	2.2
Y2-160M2-2	15.0	28.7	2970	89	0.89	2.0	8.0	2.2

# ABLE MOTORS

توجه: با توجه به تنوع برند و تغییر طراحی جزئی در آن ها ، امکان وجود تفاوت جزئی در بعضی از اعداد ارائه شده وجود دارد

## TECHNICAL DATA

Model	Power (kW)	Current at 380V (A)	Speed (r.p.m)	Eff. (%)	Power Factor	Locked rotor torque Rated to rque	Locked rotor current Rated current	Max torque Rated torque
Y2-160L-2	18.5	34.6	2970	90	0.90	2.0	8.0	2.2
Y2-180M-2	22.0	40.9	2970	90.5	0.90	2.0	8.0	2.2
Y2-200L1-2	30.0	55.4	2970	91.2	0.90	2.0	8.0	2.2
Y2-200L2-2	37.0	67.7	2980	92	0.90	2.0	8.0	2.2
Y2-225M-2	45.0	82.3	2980	92.3	0.90	1.8	8.0	2.2
Y2-250M-2	55	101	2980	92.5	0.90	1.8	7.0	2.2
Y2-280S-2	75	134	2980	93.0	0.90	1.8	7.0	2.2
Y2-280M-2	90	160	2980	93.8	0.91	1.8	7.0	2.2
Y2-315S-2	110	195	2980	94.0	0.91	1.8	6.8	2.2
Y2-315M-2	132	233	2980	94.5	0.91	1.8	6.8	2.2
Y2-315L1-2	160	279	2980	94.6	0.92	1.8	6.8	2.2
Y2-315L2-2	200	348	2980	94.8	0.92	1.8	6.8	2.2
Y2-355M-2	250	433	2980	95.3	0.92	1.6	7.0	2.2
Y2-355L-2	315	544	2980	95.6	0.92	1.6	7.0	2.2
Synchronous Speed 1500 r/min (4 Poles)50Hz								
Y2-631-4	0.12	0.44	1400	57	0.72	2.2	4.5	2.2
Y2-632-4	0.18	0.62	1400	60	0.73	2.2	4.5	2.2
Y2-711-4	0.25	0.79	1400	65	0.74	2.2	5.5	2.2
Y2-712-4	0.37	1.12	1400	67	0.75	2.2	5.5	2.2
Y2-801-4	0.55	1.6	1400	71	0.75	2.2	5.5	2.2
Y2-802-4	0.75	2.0	1400	73	0.77	2.2	6.0	2.2
Y2-90S-4	1.1	2.9	1400	75	0.77	2.2	6.0	2.2
Y2-90L-4	1.5	3.7	1400	78	0.79	2.2	6.0	2.2
Y2-100L1-4	2.2	5.1	1420	80	0.81	2.2	7.0	2.2
Y2-100L2-4	3.0	6.8	1420	82	0.82	2.2	7.0	2.2
Y2-112M-4	4.0	8.8	1440	84	0.82	2.2	7.0	2.2
Y2-132S-4	5.5	11.8	1440	85	0.83	2.2	7.0	2.2
Y2-132M-4	7.5	15.5	1440	87	0.84	2.0	7.0	2.0
Y2-160M-4	11.0	22.3	1460	88	0.85	2.0	7.0	2.2
Y2-160L-4	15.0	30	1460	89	0.85	2.0	7.0	2.2
Y2-180M-4	18.5	36.4	1470	90.5	0.85	2.2	7.5	2.2
Y2-180L-4	22.0	43.1	1470	91	0.85	2.2	7.5	2.2
Y2-200L-4	30.0	57.4	1470	92	0.86	2.2	7.5	2.2
Y2-225S-4	37.0	69.9	1480	92.5	0.87	2.2	7.5	2.2
Y2-225M-4	45.0	84.7	1480	92.8	0.87	2.2	7.5	2.2
Y2-250M-4	55	103	1480	93.0	0.89	2.2	7.0	2.2
Y2-280S-4	75	140	1480	93.8	0.86	2.2	7.0	2.2
Y2-280M-4	90	167	1490	94.2	0.86	2.2	7.0	2.2
Y2-315S-4	110	201	1490	94.5	0.87	2.1	6.9	2.2
Y2-315M-4	132	240	1490	94.8	0.87	2.1	6.9	2.2
Y2-315L1-4	160	287	1490	94.9	0.88	2.1	6.9	2.2
Y2-315L2-4	200	359	1490	95.0	0.88	2.3	6.9	2.2
Y2-355M-4	250	443	1485	95.3	0.88	2.3	6.8	2.2
Y2-355L-4	315	556	1485	95.6	0.89	2.2	6.9	2.2
Synchronous Speed 1000r/min (6 Poles)50Hz								
Y2-711-6	0.18	0.74	900	56	0.66	2.2	4.0	2.2
Y2-712-6	0.25	0.94	900	59	0.68	2.0	4.0	2.2
Y2-801-6	0.37	1.3	900	62	0.70	2.0	5.0	2.2
Y2-802-6	0.55	1.8	900	65	0.72	2.0	5.0	2.2
Y2-90S-6	0.75	2.3	910	69	0.72	2.0	5.5	2.2
Y2-90L-6	1.1	3.2	910	72	0.73	2.0	5.5	2.2
Y2-100L-6	1.5	3.9	940	76	0.76	2.0	5.5	2.2
Y2-112M-6	2.2	5.6	940	79	0.76	2.0	6.5	2.2
Y2-132S-6	3.0	7.4	960	81	0.76	2.0	6.5	2.2

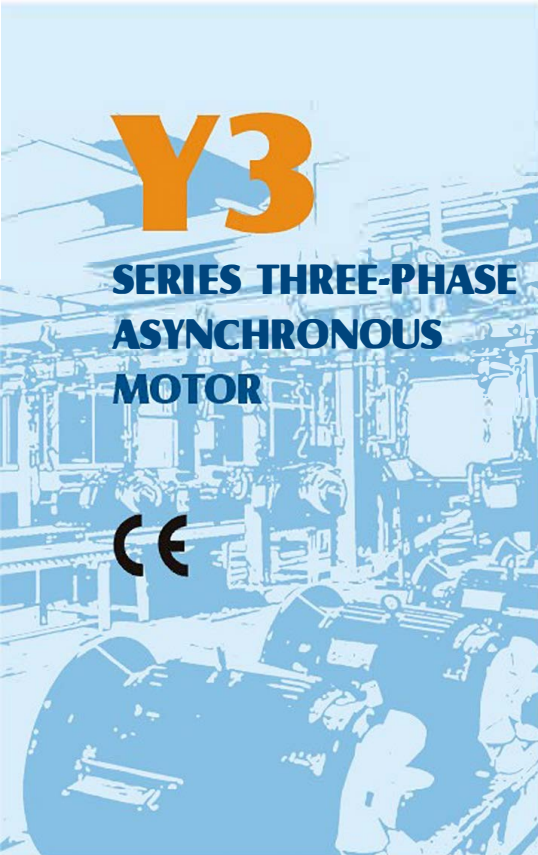
توجه: با توجه به تنوع برند و تغییر طراحی جزئی در آن ها ، امکان وجود تفاوت جزئی در بعضی از اعداد ارائه شده وجود دارد

## TECHNICAL DATA

Model	Power (kW)	Current at 380V (A)	Speed (r.p.m)	Eff. (%)	Power Factor	Locked rotor torque Rated torque	Locked rotor current Rated current	Max torque Rated torque
Y2-132M1-6	4.0	9.7	960	82	0.76	2.0	6.5	2.2
Y2-132M2-6	5.5	12.9	960	84	0.77	2.0	6.5	2.0
Y2-160M	7.5	16.5	970	86	0.80	2.0	6.5	2.0
Y2-160L-6	11.0	24.1	970	87.5	0.79	2.0	6.5	2.0
Y2-180L-6	15.0	31.5	970	89	0.81	2.0	7.0	2.0
Y2-200L1-6	18.5	38.5	970	90	0.81	2.0	7.0	2.0
Y2-200L2-6	22.0	44.6	970	90	0.83	2.0	7.0	2.0
Y2-225M-6	30.0	59.3	980	91.5	0.84	2.0	7.0	2.1
Y2-250M-6	37.0	71.0	980	92.0	0.86	2.0	7.0	2.1
Y2-280S-6	45.0	86.0	980	92.5	0.86	2.0	7.0	2.0
Y2-280M-6	55	105	980	92.8	0.86	2.0	7.0	2.0
Y2-315S-6	75	141	990	93.5	0.86	2.0	7.0	2.0
Y2-315M-6	90	169	990	93.8	0.86	2.0	7.0	2.0
Y2-315L1-6	110	206	990	94.0	0.86	2.0	6.7	2.0
Y2-315L2-6	132	244	990	94.2	0.87	2.0	6.7	2.0
Y2-355M1-6	160	292	990	94.5	0.88	1.9	6.7	2.0
Y2-355M2-6	200	365	990	94.7	0.88	1.9	6.7	2.0
Y2-355L-6	250	455	990	94.9	0.88	1.9	6.7	2.0
Synchronous Speed 750 r/min (8 Poles)50Hz								
Y2-801-8	0.18	0.88	680	51	0.61	1.8	3.3	1.9
Y2-802-8	0.25	1.15	680	54	0.61	1.8	3.3	1.9
Y2-90S-8	0.37	1.5	680	62	0.61	1.8	4.0	1.9
Y2-90L-8	0.55	2.2	700	63	0.61	1.8	4.0	2.0
Y2-100L1-8	0.75	2.4	700	71	0.67	1.8	4.0	2.0
Y2-100L2-8	1.1	3.3	700	73	0.69	1.8	5.0	2.0
Y2-112M-8	1.5	4.5	700	75	0.68	1.8	5.0	2.0
Y2-132S-8	2.2	6.0	710	78	0.71	2.0	6.0	2.0
Y2-132M-8	3.0	7.9	710	79	0.73	2.0	6.0	2.0
Y2-160M1-8	4.0	10.2	720	81	0.73	2.0	6.0	2.0
Y2-160M2-4	5.5	13.6	720	83	0.74	2.0	6.0	2.0
Y2-160L-8	7.5	17.7	720	85.5	0.75	2.0	6.0	2.0
Y2-180L-8	11.0	25.1	730	87.5	0.76	2.0	6.5	2.0
Y2-200L-8	15.0	34.0	730	88	0.76	2.0	6.5	2.0
Y2-225S-8	18.5	40.6	740	90.0	0.76	1.9	6.6	2.0
Y2-225M-8	22.0	47.4	740	90.5	0.78	1.9	6.6	2.0
Y2-250M-8	30.0	64.0	740	91.0	0.79	1.9	6.6	2.0
Y2-280S-8	37.0	78.0	740	91.5	0.79	1.9	6.6	2.0
Y2-280M-4	45.0	94.0	740	92.0	0.79	1.9	6.6	2.0
Y2-315S-8	55	111	740	92.8	0.81	1.8	6.6	2.0
Y2-315M-8	75	151	740	93.0	0.81	1.8	6.6	2.0
Y2-315L1-8	90	178	740	93.8	0.82	1.8	6.6	2.0
Y2-315L2-8	110	217	740	94.0	0.82	1.8	6.4	2.0
Y2-355M1-8	132	261	740	93.7	0.82	1.8	6.4	2.0
Y2-355M2-8	160	313	740	94.2	0.82	1.8	6.4	2.0
Y2-355L-8	200	388	740	94.5	0.83	1.8	6.4	2.0
Synchronous Speed 600r/min (10 Poles)50Hz								
Y2-315S-10	45	100	590	91.5	0.75	1.5	6.2	2.0
Y2-315M-10	55	121	590	92	0.75	1.5	6.2	2.0
Y2-315L1-10	75	162	590	92.5	0.76	1.5	6.2	2.0
Y2-315L2-10	90	191	590	93	0.77	1.5	6.2	2.0
Y2-355M1-10	110	230	590	93.2	0.78	1.3	6.0	2.0
Y2-355M2-10	132	275	590	93.5	0.78	1.3	6.0	2.0
Y2-315L-10	160	334	590	93.5	0.78	1.3	6.0	2.0



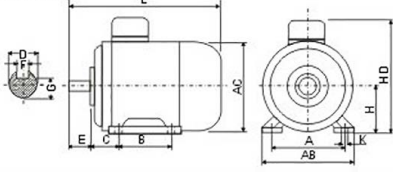
# مشخصات فنی و ابعاد و اندازه الکتروموتورهای چینی سه فاز پوسته چدن (سری Y3)



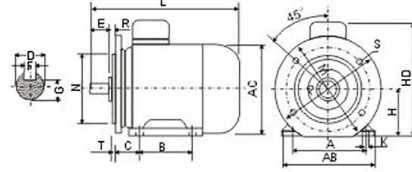
توجه: با توجه به تنوع برند و تغییر طراحی جزئی در آن ها ، امکان وجود تفاوت جزئی در بعضی از اعداد ارائه شده وجود دارد

توجه: با توجه به تنوع برند و تغییر طراحی جزئی در آن ها ، امکان وجود تفاوت جزئی در بعضی از اعداد ارائه شده وجود دارد

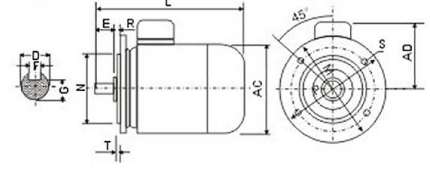
IMB3



IMB35



IMB5



## INSTALLATION DIMENSIONS

Frame Size	Mounting Dimensions (mm)																Frame Dimensions (mm)								
	A	B	C	D		E		F		G		H	K	M	N	P	R	S	T	AB	AC	AD	HD	L	
				2P	4,6,8,10P	2P	4,6,8,10P	2P	4,6,8,10P	2P	4,6,8,10P												2P	4,6,8,10P	
63	100	80	40	11	23	4	8.5	63	7	115	95	140	0	10	3	135	130	70	180	230					
71	112	90	45	14	30	5	11	71	7	130	110	160	0	10	3	150	145	80	195	255					
80	125	100	50	19	40	6	15.5	80	10	165	130	200	0	12	3.5	165	175	145	220	295					
90S	140	100	56	24	50	8	20	90	10	165	130	200	0	12	3.5	180	195	155	250	320					
90L	140	125	56	24	50	8	20	90	10	165	130	200	0	12	3.5	180	195	155	250	345					
100L	160	140	63	28	60	8	24	100	12	215	180	250	0	15	4	205	215	180	270	385					
112M	190	140	70	28	60	8	24	112	12	215	180	250	0	15	4	230	240	190	300	400					
132S	216	140	89	38	80	10	33	132	12	265	230	300	0	15	4	270	275	210	345	470					
132M	216	178	89	38	80	10	33	132	12	265	230	300	0	15	4	270	275	210	345	510					
160M	254	210	108	42	110	12	37	160	15	300	250	350	0	19	5	320	330	255	420	615					
160L	254	254	108	42	110	12	37	160	15	300	250	350	0	19	5	320	330	255	420	670					
180M	279	241	121	48	110	14	42.5	180	15	300	250	350	0	19	5	355	380	280	455	700					
180L	279	279	121	48	110	14	42.5	180	15	300	250	350	0	19	5	355	380	280	455	740					
200L	318	305	133	55	110	16	49	200	19	350	300	400	0	19	5	395	420	305	505	770					
225S	356	286	149	-	60	-	18	-	53	225	19	400	350	450	0	19	5	435	470	335	560	-	820		
225M	356	311	149	55	60	110	140	16	18	49	53	225	19	400	350	450	0	19	5	435	470	335	560	815	845
250M	406	349	168	60	65	140	18	53	58	250	24	500	450	550	0	19	5	490	510	370	615	910			
280S	457	368	190	65	75	140	18	20	58	280	24	500	450	550	0	19	5	550	580	410	680	985			
280M	457	419	190	65	75	140	18	20	58	280	24	500	450	550	0	19	5	550	580	410	680	1035			
315S	508	406	216	65	80	140	170	18	22	58	71	315	28	600	550	660	0	24	6	635	645	630	845	1185	1215
315M	508	457	216	65	80	140	170	18	22	58	71	315	28	600	550	660	0	24	6	635	645	630	845	1295	1325
315L	508	508	216	65	80	140	170	18	22	58	71	315	28	600	550	660	0	24	6	635	645	630	845	1295	1325
355M	610	560	254	75	95	140	170	20	25	67.5	86	355	28	740	680	800	0	24	6	730	710	655	1010	1500	1530
355L	610	630	254	75	95	140	170	20	25	67.5	86	355	28	740	680	800	0	24	6	730	710	655	1010	1500	1530

اعداد مندرج، بر حسب میلیمتر (mm) می باشد

## TECHNICAL DATA

Model	Power (kW)	Current at 380V (A)	Speed (r.p.m)	Eff. (%)	Power Factor	Locked rotor torque Rated torque	Locked rotor current Rated current	Max torque Rated torque
Synchronous Speed 3000r/min (2 Poles) 50Hz								
Y3-631-2	0.18	0.52	2825	65.0	0.80	2.3	5.5	2.2
Y3-632-2	0.25	0.69	2840	68.0	0.81	2.3	5.5	2.2
Y3-711-2	0.37	0.99	2840	69.0	0.81	2.3	6.1	2.2
Y3-712-2	0.55	1.4	2880	74.0	0.82	2.3	6.1	2.3
Y3-801-2	0.75	1.8	2890	75.0	0.83	2.2	6.1	2.3
Y3-802-2	1.1	2.6	2900	76.2	0.84	2.2	6.9	2.3
Y3-90S-2	1.5	3.4	2900	78.5	0.84	2.2	7.0	2.3
Y3-90L-2	2.2	4.8	2930	81.0	0.85	2.2	7.0	2.3
Y3-100L-2	3.0	6.3	2930	82.6	0.87	2.2	7.5	2.3
Y3-112M-2	4.0	8.1	2930	84.2	0.88	2.2	7.5	2.3
Y3-132S1-2	5.5	11	2940	85.7	0.88	2.2	7.5	2.3
Y3-132S2-2	7.5	15	2950	87.0	0.88	2.2	7.5	2.3
Y3-160M1-2	11.0	21.3	2950	88.4	0.89	2.2	7.5	2.3

# ABLE MOTORS

توجه: با توجه به تنوع برند و تغییر طراحی جزئی در آن ها ، امکان وجود تفاوت جزئی در بعضی از اعداد ارائه شده وجود دارد

## TECHNICAL DATA

Model	Power (kW)	Current at 380V (A)	Speed (r.p.m)	Eff. (%)	Power Factor	Locked rotor torque Rated torque	Locked rotor current Rated current	Max torque Rated torque
Y3-160M2-2	15.0	28.7	2970	89.4	0.89	2.2	7.5	2.3
Y3-160L-2	18.5	34.6	2970	90.0	0.90	2.2	7.5	2.3
Y3-180M-2	22.0	40.9	2970	90.5	0.90	2	7.5	2.3
Y3-200L1-2	30.0	55.4	2970	91.4	0.90	2	7.5	2.3
Y3-200L2-2	37.0	67.7	2980	92.0	0.90	2	7.5	2.3
Y3-225M-2	45.0	82.3	2980	92.5	0.90	2	7.5	2.3
Y3-250M-2	55	101	2980	93.0	0.90	2	7.5	2.3
Y3-280S-2	75	134	2980	93.6	0.90	2	7.0	2.3
Y3-280M-2	90	160	2980	93.9	0.91	2	7.1	2.3
Y3-315S-2	110	195	2980	94.0	0.91	1.8	7.1	2.2
Y3-315M-2	132	233	2980	94.5	0.91	1.8	7.1	2.2
Y3-315L1-2	160	279	2980	94.6	0.91	1.8	7.1	2.2
Y3-315L2-2	200	348	2980	94.8	0.92	1.8	7.1	2.2
Y3-355M-2	250	433	2980	95.2	0.92	1.6	7.1	2.2
Y3-355L-2	315	544	2980	95.4	0.92	1.6	7.1	2.2
Synchronous Speed 1500 r/min (4 Poles)50Hz								
Y3-631-4	0.12	0.44	1400	57.0	0.72	2.1	4.4	2.2
Y3-632-4	0.18	0.62	1400	60.0	0.73	2.1	4.4	2.2
Y3-711-4	0.25	0.79	1400	65.0	0.74	2.1	5.2	2.2
Y3-712-4	0.37	1.12	1400	67.0	0.75	2.1	5.2	2.2
Y3-801-4	0.55	1.6	1400	71.0	0.75	2.4	5.2	2.3
Y3-802-4	0.75	2.0	1400	73.0	0.76	2.3	6.0	2.3
Y3-90S-4	1.1	2.9	1400	76.2	0.77	2.3	6.0	2.3
Y3-90L-4	1.5	3.7	1400	78.5	0.78	2.3	6.0	2.3
Y3-100L1-4	2.2	5.1	1420	81.0	0.81	2.3	7.0	2.3
Y3-100L2-4	3.0	6.8	1420	82.6	0.82	2.3	7.0	2.3
Y3-112M-4	4.0	8.8	1440	84.2	0.82	2.3	7.0	2.3
Y3-132S-4	5.5	11.8	1440	85.7	0.83	2.3	7.0	2.3
Y3-132M-4	7.5	15.5	1440	87.0	0.84	2.3	7.0	2.3
Y3-160M-4	11.0	22.3	1460	88.4	0.84	2.2	7.0	2.3
Y3-160L-4	15.0	30	1460	89.4	0.85	2.2	7.5	2.3
Y3-180M-4	18.5	36.4	1470	90.0	0.86	2.2	7.5	2.3
Y3-180L-4	22.0	43.1	1470	90.5	0.86	2.2	7.5	2.3
Y3-200L-4	30.0	57.4	1470	91.4	0.86	2.2	7.2	2.3
Y3-225S-4	37.0	69.9	1480	92.0	0.87	2.2	7.2	2.3
Y3-225M-4	45.0	84.7	1480	92.5	0.87	2.2	7.2	2.3
Y3-250M-4	55	103	1480	93.0	0.87	2.2	7.2	2.3
Y3-280S-4	75	140	1480	93.6	0.88	2.2	6.8	2.3
Y3-280M-4	90	167	1490	93.9	0.88	2.2	6.8	2.3
Y3-315S-4	110	201	1490	94.5	0.88	2.1	6.9	2.2
Y3-315M-4	132	240	1490	94.8	0.88	2.1	6.9	2.2
Y3-315L1-4	160	287	1490	94.9	0.89	2.1	6.9	2.2
Y3-315L2-4	200	359	1490	94.9	0.89	2.1	6.9	2.2
Y3-355M-4	250	443	1485	95.2	0.90	2.1	6.9	2.2
Y3-355L-4	315	556	1485	95.2	0.90	2.1	6.9	2.2
Synchronous Speed 1000r/min (6 Poles)50Hz								
Y3-711-6	0.18	0.74	900	56.0	0.66	1.9	4.0	2.0
Y3-712-6	0.25	0.94	900	59.0	0.68	1.9	4.0	2.0
Y3-801-6	0.37	1.3	900	62.0	0.70	1.9	4.7	2.0
Y3-802-6	0.55	1.8	900	65.0	0.72	1.9	4.7	2.1
Y3-90S-6	0.75	2.3	910	69.0	0.72	2.0	5.3	2.1
Y3-90L-6	1.1	3.2	910	72.0	0.73	2.0	5.5	2.1
Y3-100L-6	1.5	3.9	940	76.0	0.75	2.0	5.5	2.1
Y3-112M-6	2.2	5.6	940	79.0	0.76	2.0	6.5	2.1

توجه: با توجه به تنوع برند و تغییر طراحی جزئی در آن ها ، امکان وجود تفاوت جزئی در بعضی از اعداد ارائه شده وجود دارد

## TECHNICAL DATA

Model	Power (kW)	Current at 380V (A)	Speed (r.p.m)	Eff. (%)	Power Factor	Locked rotor torque Rated torque	Locked rotor current Rated current	Max torque Rated torque
Y3-132S-6	3.0	7.4	960	81.0	0.76	2.1	6.5	2.1
Y3-132M1-6	4.0	9.7	960	82.0	0.76	2.1	6.5	2.1
Y3-132M2-6	5.5	12.9	960	84.0	0.77	2.1	6.5	2.1
Y3-160M	7.5	16.5	970	86.0	0.77	2.0	6.5	2.1
Y3-160L-6	11.0	24.1	970	87.5	0.78	2.0	6.5	2.1
Y3-180L-6	15.0	31.5	970	89.0	0.81	2.0	7.0	2.1
Y3-200L1-6	18.5	38.5	970	90.0	0.81	2.1	7.0	2.1
Y3-200L2-6	22.0	44.6	970	90.0	0.83	2.0	7.0	2.1
Y3-225M-6	30.0	59.3	980	91.5	0.84	2.0	7.0	2.1
Y3-250M-6	37.0	71.0	980	92.0	0.86	2.1	7.0	2.1
Y3-280S-6	45.0	86.0	980	92.5	0.86	2.1	7.0	2.0
Y3-280M-6	55	105	980	92.8	0.86	2.1	7.0	2.0
Y3-315S-6	75	141	990	93.5	0.86	2.0	6.7	2.0
Y3-315M-6	90	169	990	93.8	0.86	2.0	6.7	2.0
Y3-315L1-6	110	206	990	94.0	0.86	2.0	6.7	2.0
Y3-315L2-6	132	244	990	94.2	0.87	2.0	6.7	2.0
Y3-355M1-6	160	292	990	94.5	0.88	1.9	6.7	2.0
Y3-355M2-6	200	365	990	94.5	0.88	1.9	6.7	2.0
Y3-355L-6	250	455	990	94.5	0.88	1.9	6.7	2.0
Synchronous Speed 600 r/m in (10Poles)50Hz								
Y3-801-8	0.18	0.88	680	51.0	0.61	1.8	3.3	1.9
Y3-802-8	0.25	1.15	680	54.0	0.61	1.8	3.3	1.9
Y3-90S-8	0.37	1.5	600	62.0	0.61	1.0	4.0	1.9
Y3-90L-8	0.55	2.2	700	63.0	0.61	1.8	4.0	2.0
Y3-100L1-8	0.75	2.4	700	70.0	0.67	1.8	4.0	2.0
Y3-100L2-8	1.1	3.3	700	72.0	0.69	1.8	5.0	2.0
Y3-112M-8	1.5	4.5	700	74.0	0.70	1.8	5.0	2.0
Y3-132S-8	2.2	6.0	710	79.0	0.71	1.8	6.0	2.0
Y3-132M-8	3.0	7.9	710	80.0	0.73	1.8	6.0	2.0
Y3-160M1-8	4.0	10.2	720	81.0	0.73	1.9	6.0	2.0
Y3-160M2-4	5.5	13.6	720	83.0	0.74	1.9	6.0	2.0
Y3-160L-8	7.5	17.7	720	85.5	0.75	1.9	6.0	2.0
Y3-180L-8	11.0	25.1	730	87.5	0.75	2.0	6.5	2.0
Y3-200L-8	15.0	34.0	730	88.0	0.76	2.0	6.6	2.0
Y3-225S-8	18.5	40.6	740	90.0	0.76	1.9	6.6	2.0
Y3-225M-8	22.0	47.4	740	90.5	0.78	1.9	6.6	2.0
Y3-250M-8	30.0	64.0	740	91.0	0.79	1.9	6.5	2.0
Y3-280S-8	37.0	78.0	740	91.5	0.79	1.9	6.6	2.0
Y3-280M-4	45.0	94.0	740	92.0	0.79	1.9	6.6	2.0
Y3-315S-8	55	111	740	92.8	0.81	1.8	6.6	2.0
Y3-315M-8	75	151	740	93.5	0.81	1.8	6.2	2.0
Y3-315L1-8	90	178	740	93.8	0.82	1.8	6.4	2.0
Y3-315L2-8	110	217	740	94.0	0.82	1.8	6.4	2.0
Y3-355M1-8	132	261	740	93.7	0.82	1.8	6.4	2.0
Y3-355M2-8	160	313	740	94.2	0.82	1.8	6.4	2.0
Y3-355L-8	200	388	740	94.5	0.83	1.8	6.4	2.0
Synchronous Speed 750 r/m in (8 Poles)50Hz								
Y3-315S-10	45	100	590	91.5	0.75	1.5	6.2	2.0
Y3-315M-10	55	121	590	92.0	0.75	1.5	6.2	2.0
Y3-315L1-10	75	162	590	92.5	0.76	1.5	5.8	2.0
Y3-315L2-10	90	191	590	93.0	0.77	1.5	5.9	2.0
Y3-355M1-10	110	230	590	93.2	0.78	1.3	6.0	2.0
Y3-355M2-10	132	275	590	93.5	0.78	1.3	6.0	2.0
Y3-315L-10	160	334	590	93.5	0.78	1.3	6.0	2.0