

## مشخصات فنی الکتروموتورهای سه فاز کایجیلی پوسته چدن SRM SDF SDF

### CDF SDF 技术数据 TECHNICAL DATA OF CDF SDF

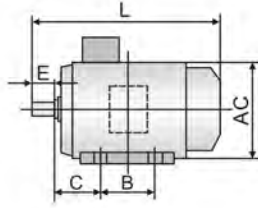
型号 Model	功率 Output		电流 Current (A)		转速 Speed (r/min)	效率 Efficiency (%)	功率因素 Power Factor	堵转转矩 额定转矩 Tstart/Tn	堵转电流 额定电流 Ist/In	最大转矩 额定转矩 Tmax/Tn
	kW	HP	380 V	400 V						
同步转速3000转/分 (2极) 380V 50Hz Synchronous Speed 3000 r/min (2 Poles)										
631-2	0.18	0.24	0.53	0.50	2730	65.0	0.80	2.2	5.5	2.2
632-2	0.25	0.33	0.66	0.60	2730	40.0	8.81	2.6	5.5	2.6
711-2	0.37	0.50	0.95	0.90	2750	72.3	0.82	2.4	6.1	2.5
712-2	0.55	0.75	1.33	1.26	2790	76.0	0.82	2.4	6.1	2.9
801-2	0.75	1	1.83	1.71	2845	76.1	0.83	2.4	7.0	2.5
802-2	1.1	1.5	2.60	2.5	2840	76.2	0.83	2.5	7.0	2.5
90S-2	1.5	2	3.50	3.3	2840	78.8	0.84	2.7	7.0	2.8
90L-2	2.2	3	4.80	4.6	2840	81.0	0.84	2.5	6.0	2.8
100L-2	3.0	4	6.40	6.1	2830	82.8	0.87	2.2	7.5	2.5
112M-2	4.0	5.5	8.10	7.7	2890	84.2	0.88	2.3	7.1	2.3
132S1-2	5.5	7.5	11.0	10.5	2910	85.9	0.88	2.3	7.5	2.5
132S1-2	7.5	10	15.0	14.3	2905	87.3	0.88	2.2	7.5	2.4
160M1-2	11	15	22.0	20	2935	88.6	0.89	2.3	7.7	3.1
160M2-2	15	20	29.0	27	2935	89.4	0.90	2.4	7.6	3.1
160L-2	18.5	25	35.0	33	2935	90.1	0.91	2.7	7.7	3.2
180M-2	22	30	41.0	39	2940	90.6	0.90	2.0	7.7	2.7
200L1-2	30	40	56.0	53	2945	91.6	0.90	2.1	6.9	2.8
200L2-2	37	50	68.0	64	2945	92.2	0.90	2.2	7.0	2.6
225M-2	45	60	81.0	77	2950	92.7	0.90	2.4	7.3	3.1
250M-2	55	75	100	95	2965	93.1	0.90	2.6	7.6	3.1
280S-2	75	100	134	127	2965	93.8	0.91	2.2	7.8	2.5
280M-2	90	125	160	152	2965	94.4	0.91	2.2	7.8	2.5
315S-2	110	150	196	186	2975	94.4	0.91	1.8	7.1	2.4
315M-2	132	180	234	222	2975	94.9	0.91	1.8	7.1	2.4
315L1-2	160	215	280	266	2975	95.1	0.92	1.8	7.1	2.5
315L2-2	200	270	348	331	2975	95.2	0.90	1.8	7.1	2.5
355M-2	250	340	430	410	2970	95.3	0.90	1.6	7.3	2.2
355L-2	315	420	543	515	2970	95.6	0.92	1.6	7.3	2.2
同步转速1500转/分 (4极) 380V 50Hz Synchronous Speed 1500 r/min (4 Poles)										
631-4	0.12	0.16	0.44	0.42	1320	57.0	0.72	2.4	5.2	2.2
632-4	0.18	0.24	0.53	0.60	1320	60.0	0.72	2.4	5.2	2.5
711-4	0.25	0.33	0.73	0.79	1350	65.0	0.70	2.5	5.2	3.0
712-4	0.37	0.50	1.10	1.0	1340	67.0	0.75	2.5	5.2	3.1
801-4	0.55	0.75	1.50	1.4	1390	71.0	0.77	2.5	5.3	2.5
802-4	0.75	1.0	2.0	1.9	1380	74.4	0.77	2.5	5.3	2.5
90S-4	1.1	1.5	3.0	2.9	1390	76.3	0.75	2.5	4.7	2.3
90L-4	1.5	2	3.9	3.7	1390	78.5	0.76	2.2	5.2	2.6
100L1-4	2.2	3	5.2	4.9	1410	81.2	0.81	2.3	6.8	2.5
100L2-4	3.0	4	6.8	6.5	1410	82.8	0.82	2.3	7.1	2.5
112M-4	4.0	5.5	8.7	8.3	1440	84.2	0.82	2.3	6.4	2.6
132S-4	5.5	7.6	12	11	1445	85.7	0.83	2.3	7.0	2.5
132M-4	7.5	10	16	15	1445	87.2	0.84	2.3	7.0	2.5
160M-4	11	15	23	22	1460	88.4	0.85	2.4	7.0	2.9
160L-4	15	20	30	28	1460	89.5	0.85	2.6	7.6	2.9
180M-4	18.5	25	36	34	1470	90.2	0.87	2.2	7.0	3.0
180L-4	22	30	42	40	1470	90.6	0.87	2.2	7.0	2.7
200L-4	30	40	58	55	1470	91.4	0.86	2.2	7.2	3.0
225S-4	37	50	70	66	1475	92.2	0.87	2.2	6.9	2.8
225M-4	45	60	85	80	1475	92.5	0.87	2.2	7.0	3.0
250M-4	55	75	106	98	1475	93.1	0.87	2.2	7.4	2.8
280S-4	75	100	140	133	1485	93.7	0.87	2.2	7.5	2.4
280M-4	90	125	167	159	1485	93.9	0.87	2.2	7.5	2.4
315S-4	110	150	201	191	1485	94.5	0.88	2.2	6.9	2.7
315M-4	132	180	241	227	1485	94.8	0.88	2.2	6.9	2.6
315L1-4	160	220	288	273	1485	95.1	0.89	2.2	6.9	2.4
315L2-4	200	270	350	342	1485	95.2	0.89	2.2	6.9	2.4
355M-4	250	340	440	415	1490	95.3	0.91	2.3	6.8	2.3
355L-4	315	420	550	520	1490	95.6	0.91	2.3	6.8	2.3

所有技术说明均基于380V/50Hz满负荷。 All technical details are based on full-load 380V/50Hz.

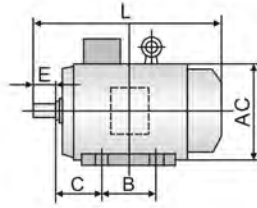
# CDF SDF (SRM)

## 系列三相异步电动机

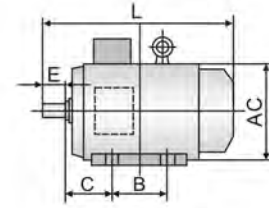
### SERIES THREE-PHASE ASYNCHRONOUS INDUCTION MOTOR



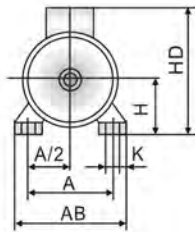
H63~90



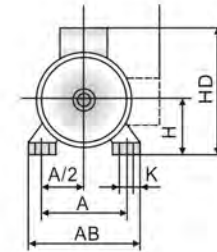
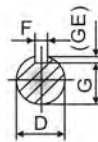
H100~132



H160~335



H63~71



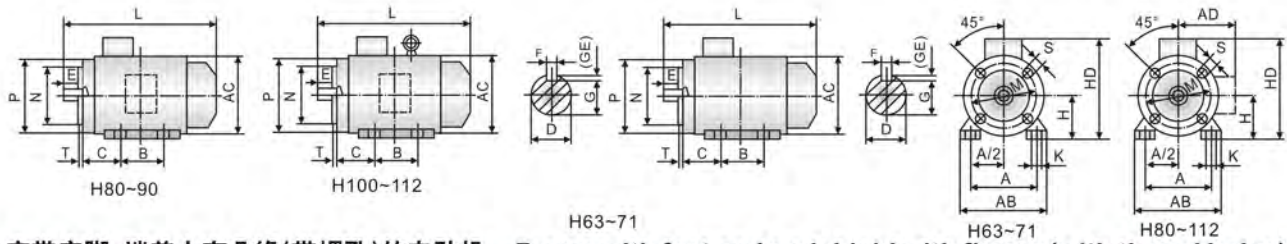
H80~355

#### 机座带底脚，端盖上无凸缘的电动机 Frame with feet and endshield without flange

机座号 Frame size	极数 Poles	安装尺寸 Mounting dimensions										外形尺寸 Overall dimensions					
		A	A/2	B	C	D	E	F	G	H	K	AB	AC	AD	HD	L	
63	2, 4	100	50	80	40	11	23	4	8.5	63	7	135	130	70	180	225	
71	2, 4, 6	112	56	90	45	14	30	5	11	71		150	145	80	195	250	
80	2, 4, 6, 8	125	62.5	100	50	19	40	6	15.5	80	10	165	175	145	214	295	
90S		140	70	100	56	24	50	8	20	90		180	195	155	250	315	
90L			125													340	
100L			160	80	140	63	28	60	24	100	12	205	215	180	270	385	
112M			190	95	140	70							112	230	240	190	300
132S			216	108	140	89	38	80	10	33	132	15	270	275	210	345	470
132M					178								270	275	210	345	510
160M			254	127	210	108	42	110	12	37	160	19	320	330	255	420	615
160L				254						14	42.5		180	355	380	280	455
180M			279	139.5	241	121	48	110	16	49	200	24	395	420	305	505	700
180L			279						16	49	200		395	420	305	505	740
200L		318	159	305	133	55	140	16	49	200	24	395	420	305	505	770	
225S	4, 8			286		60		140	18	53		225	19	435	470	335	555
225M	2	356	178	311	149	55	110	16	49	225	435						
250M	4, 6, 8	406	203	349	168	60	140	18	53	250	24	490	510	370	615	910	
	2																
280S	4, 6, 8	457	228.5	368	190	65	140	20	67.5	280	24	550	580	410	680	985	
	2																
280M	4, 6, 8	457	228.5	419	190	65	140	18	58	280	24	550	580	410	680	1035	
	2																
315S	4, 6, 8, 10	508	254	406	216	65	170	22	71	315	28	635	645	530	845	1160	
	2																
315M	4, 6, 8, 10	508	254	457	216	65	170	22	71	315	28	635	645	530	845	1290	
	2																
315L	4, 8	508	254	508	216	65	170	22	71	315	28	635	645	530	845	1290	
	2																
355M	4, 6, 8, 10	610	305	560	254	75	170	20	67.5	355	28	730	710	655	1010	1500	
	2																
355L	4, 6, 8, 10	610	305	630	254	75	170	20	67.5	355	28	730	710	655	1010	1500	
	2																

اعداد مندرج، بر حسب میلیمتر (mm) می باشد

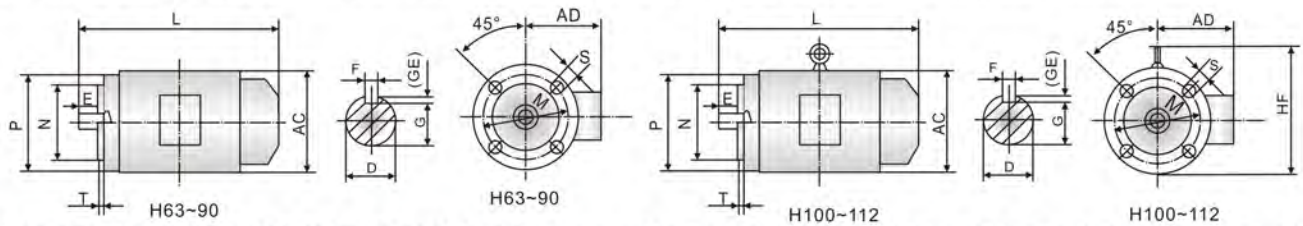




**机座带底脚, 端盖上有凸缘(带螺孔)的电动机 Frame with feet and endshield with flange (with thread holes)**

机座号 Frame size	凸缘号 Flange NO.	极数 Poles	安装尺寸 Mounting dimensions										外形尺寸 Overall dimensions							
			D	E	F	G	M	N	P	R*	S	T	凸缘孔数 Flangeholes	AB	AC	AD	HD	L		
63	FT75	2.4	11	23	4	8.5	75	60	90	0	M5	2.5	4	135	130	70	180	225		
71	FT85	2.4.6	14	30	5	11	85	70	105					M6	2.5	150	145	80	195	250
80	FT100	2.4.6.8	19	40	6	15.5	100	80	120		M8	3.0				165	175	145	214	295
90S	FT115		24	50	8	20	115	95	140					M8	3.5	180	195	155	250	315
90L	FT130		28	60		24	130	110	160		205	215				180	270	385		
100L					230	240	190	300	400											
112M	FT165		38	80	10	33	165	130	200		M10	3.5		270	275	210	345	470		
132S														270	275	210	345	510		
132M																				

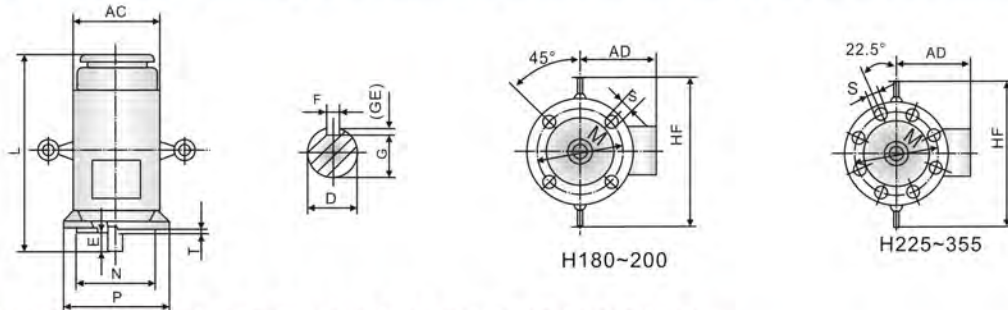
注: \*R为凸缘配合面至轴伸肩的距离。 Note: R is the distance from the flange mounting-plane to the shaft-extension shoulder.



**机座不带底脚, 端盖上有凸缘(带螺孔)的电动机 Frame without feet and endshield with flange (with thread holes)**

机座号 Frame size	凸缘号 Flange NO.	极数 Poles	安装尺寸 Mounting dimensions										外形尺寸 Overall dimensions						
			D	E	F	G	M	N	P	R*	S	T	凸缘孔数 Flangeholes	AC	AD	HF	L		
63	FT75	2.4	11	23	4	8.5	75	60	90	0	M6	2.5	4	130	70	130	225		
71	FT85	2.4.6	14	30	5	11	85	70	105					M6	2.5	145	80	145	250
80	FT100	2.4.6.8	19	40	6	15.5	100	80	120		M8	3.0				175	145	185	290
90S	FT115		24	50	8	20	115	95	140					M8	3.5	195	155	190	315
90L	FT130		28	60		24	130	110	160		215	180				245	380		
100L					240	190	265	400											
112M	FT165		38	80	10	33	165	130	200		M10	3.5		275	210	315	470		
132S														275	210	315	510		
132M																			

注: \*R为凸缘配合面至轴伸肩的距离。 Note: R is the distance from the flange mounting-plane to the shaft-extension shoulder.



**立体安装, 机座不带底脚, 端盖上有凸缘(带通孔), 轴伸向下的电动机  
Vertical type, frame without feet and enshield with flange (with thread holes)**

机座号 Frame size	凸缘号 Flange NO.	极数 Poles	安装尺寸 Mounting dimensions										外形尺寸 Overall dimensions							
			D	E	F	G	M	N	P	R*	S	T	凸缘孔数 Flangeholes	AC	AD	HF	L			
180M	FF300	2.4.6.8	48	110	14	42.5	300	250	350	0	19	5	4	380	280	500	760			
180L			16		49	350	300	400	420					305	550	840				
200L	FF350	4.8	60	140	18	53	400	350	450					M6	2.5	4	470	335	610	910
225S		2	55	110	16	49											470	335	610	935
225M	FF400	4.6.8	60	18	53	400	350	450	M8					3.0	3.0	4	510	370	650	1015
250M		2	65		58												510	370	650	1015
280S	FF500	4.6.8	75	140	20	67.5	500	450	550					M8	3.0	4	580	410	720	1110
280M		2	65		18	58											580	410	720	1150
315S	FF600	4.6.8.10	80	170	22	71	600	550	660					M8	3.0	4	645	530	900	1280
315M		2	62		110	18											58	645	530	900
315L	FF740	4.6.8.10	80	170	22	71	740	680	800	M8	3.0	4	645	530	900	1430				
355M		2	65		140	18							58	645	530	900	1430			
355L	FF740	4.6.8.10	95	170	25	86	740	680	800	M10	3.5	4	710	655	1010	1640				
355L		2	75		140	20							67.5	710	655	1010	1670			

注: \*R为凸缘配合面至轴伸肩的距离。 Note: R is the distance from the flange mounting-plane to the shaft-extension shoulder.

اعداد مندرج، بر حسب ميليمتر (mm) می باشد