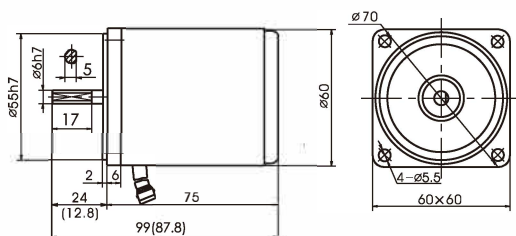


مشخصات فنی و ابعاد و اندازه الکتروگیربکس های توان 6 وات لحظه ای کار

阻尼电机 REVERSIBLE MOTOR 6W

توجه: با توجه به تنوع برند و تغییر طراحی جزئی در آن ها ، امکان وجود تفاوت جزئی در بعضی از اعداد ارائه شده وجود دارد



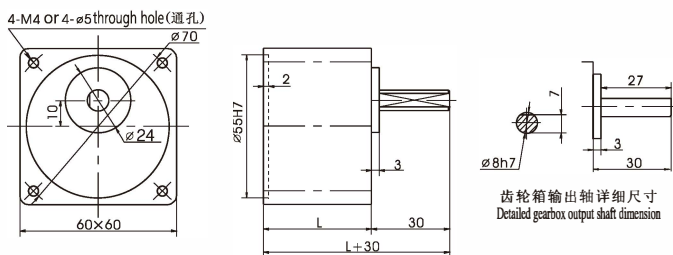
●其中()数字系小齿轮轴电机的数值。 ●The value in the () is the value of small gear shaft motor.

电机特性表 LIST OF MOTOR CHARACTERISTICS

电机型号 Model of Motor	出力 Output	电压 Voltage	频率 Frequency	极数 Poles	额定时间 Duty	额定Rated			起动转矩 Starting Torque		电容量/耐压 Capacitor/Ve		
						转速Speed	电流Current	力矩Torque	N.m	kgf.cm			
光电机 Motor	带齿轴电机 Motor with gear shaft	W	V	Hz	P	r/min	A	N.m	kgf.cm	N.m	kgf.cm	μF/VAC	
2RK6A-A	2RK6GN-A	6	1ph110	50	4	30Min	1250	0.20	0.05	0.45	0.06	0.55	3.5/250
2RK6A-C	2RK6GN-C	6	1ph220	50	4	30Min	1250	0.10	0.05	0.45	0.07	0.70	1.0/500

●使用电压不同，电容量也不相同。故应与使用电压相对应，正确使用。●不能正确使用是造成故障的主要原因。订货时，在确认使用电压后，选择正确的型号进行订货。
●The capacitor capacitance will be different under different voltage. A correct capacitor capacitance is required to match the applied voltage. ●Wrong capacitor capacitance is the cause of trouble. You must confirm a correct voltage and select a correct model when your purchase order is placed.

齿轮箱外形尺寸 OVERALL DIMENSION OF GEARBOX



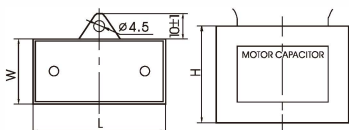
	速比Reduction Ratio	尺寸L(mm)	质量(kg)
齿轮箱 Gearbox	2GN3K-GN18K	32	0.24
	2GN20K-GN50K	42	0.30
	2GN60K-GN200K		0.33
电机Motor			0.82

齿轮箱允许力矩 ALLOWABLE TORQUE ON GEARBOX

齿轮箱型式Model of Gearbox: 2GN□K

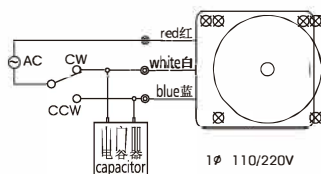
频率Frequency	减速比Reduction Ratio	3	3.6	5	6	7.5	9	10	12.5	15	18	20	25	30	36	40	50	60	75	90	100	120	150	
50Hz	输出轴转速 Output Shaft Speed	r/min	500	417	300	250	200	166	150	120	100	83	75	60	50	41	37	30	25	20	16	15	12	10
	允许力矩 Allowable torque	N.m	0.13	0.15	0.21	0.26	0.31	0.38	0.42	0.53	0.63	0.76	0.76	0.95	1.14	1.36	1.52	1.72	2.06	2.57	2.94	2.94	2.94	2.94
60Hz	输出轴转速 Output Shaft Speed	r/min	600	500	360	300	240	200	180	144	120	100	90	72	60	50	45	36	30	24	20	18	15	12
	允许力矩 Allowable Torque	N.m	0.10	0.13	0.17	0.21	0.26	0.30	0.34	0.43	0.51	0.62	0.62	0.76	0.92	1.11	1.24	1.39	1.67	2.09	2.50	2.78	2.94	2.94
		kgf.cm	1.0	1.3	1.7	2.1	2.6	3.1	3.5	4.4	5.2	6.3	6.3	7.8	9.4	11.3	12.6	14.2	17.0	21.3	25.5	28.4	30.0	30.0

电容器 CAPACITOR



电容量 μF capacity μF	耐压 Voltage	长 L±1	宽 W±1	高 H±1	类型 Type
允许偏差±5% Allowable Deviation±5%	V	mm	mm	mm	引线式 Down-lead
0.8	500	37	14	28	
1.0	500	37	14	28	
3.0	250	49	21	29	
3.5	250	47	22	34	

接线图 WIRING DIAGRAM



齿轮箱型式Model of Gearbox: 2GN□K

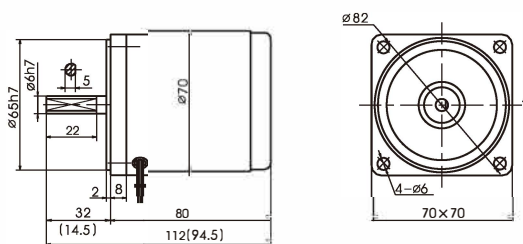
频率Frequency	减速比Reduction Ratio	180	200	
50Hz	输出轴转速 Output Shaft Speed	r/min	8	7.5
	允许力矩 Allowable Torque	N.m	2.94	2.94
60Hz	输出轴转速 Output Shaft Speed	r/min	10	9
	允许力矩 Allowable Torque	kgf.cm	30.0	30.0

阻尼电机 REVERSIBLE MOTOR

15W

مشخصات فنی و ابعاد و اندازه الکتروگیربکس های توان 15 وات
لحظه ای کار

توجه: با توجه به تنوع برند و تغییر طراحی جزئی در آن ها ، امکان وجود تفاوت جزئی در بعضی از اعداد ارائه شده وجود دارد



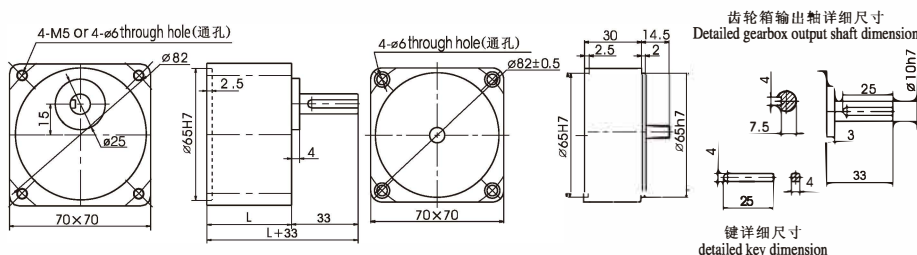
●其中()数字系小齿轮轴电机的数值。 ●The value in the () is the value of small gear shaft motor.

电机特性表 LIST OF MOTOR CHARACTERISTICS

电机型号 Model of Motor		出力 Output	电压 Voltage	频率 Frequency	极数 Poles	额定时间 Duty	额定Rated				启动转矩 Starting Torque		电容量/耐压 Capacitor/Ve
光电机 Motor	带齿轴电机 Motor with gear shaft	W	V	Hz	P		转速Speed r/min	电流Current A	力矩Torque N.m kgf.cm		N.m	kgf.cm	μF/VAC
3RK15A-A	3RK15GN-A	15	1ph110	50	4	30Min	1300	0.32	0.11	0.10	0.12	1.15	6.0/250
3RK15A-C	3RK15GN-C	15	1ph220	50	4	30Min	1300	0.17	0.11	0.10	0.12	1.20	1.5/500

●使用电压不同，电容量也不相同。故应与使用电压相对应，正确使用。●不能正确使用是造成故障的主要原因。订货时，在确认使用电压后，选择正确的型号进行订货。
●The capacitor capacitance will be different under different voltage. A correct capacitor capacitance is required to match the applied voltage. ●Wrong capacitor capacitance is the cause of trouble. You must confirm a correct voltage and select a correct model when your purchase order is placed.

齿轮箱外形尺寸 OVERALL DIMENSION OF GEARBOX



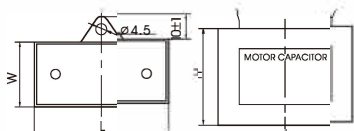
	速比Reduction Ratio	尺寸L(mm)	质量(kg)
齿轮箱 Gearbox	3GN3K-GN15K	32	0.38
	3GN18K-GN50K	43.5	0.47
	3GN60K-GN200K		0.52
中间齿轮箱 Intermediate Gearbox	3GN10X	30	0.38
电机Motor			1.12

齿轮箱允许力矩 ALLOWABLE TORQUE ON GEARBOX

齿轮箱型式Model of Gearbox: 3GN□K

频率Frequency	减速比Reduction Ratio	3	3.6	5	6	7.5	9	10	12.5	15	18	20	25	30	36	40	50	60	75	90	100	120	150	
50Hz	输出轴转速 Output Shaft Speed	r/min	500	417	300	250	200	166	150	120	100	83	75	60	50	41	37	30	25	20	16	15	12	10
	允许力矩 Allowable Torque	N.m	0.31	0.38	0.53	0.64	0.79	0.95	1.06	1.32	1.59	1.90	1.90	2.37	2.85	3.42	3.81	4.28	4.90	4.90	4.90	4.90	4.90	4.90
60Hz	输出轴转速 Output Shaft Speed	r/min	600	500	360	300	240	200	180	144	120	100	90	72	60	50	45	36	30	24	20	18	15	12
	允许力矩 Allowable Torque	N.m	0.29	0.35	0.50	0.60	0.75	0.89	0.99	1.25	1.49	1.79	1.79	2.24	2.68	3.22	3.58	4.02	4.83	4.90	4.90	4.90	4.90	4.90
		kgf.cm	3.0	3.6	5.1	6.1	7.6	9.1	10.1	12.7	15.2	18.2	18.2	22.8	27.3	32.8	36.5	41.0	49.2	50.0	50.0	50.0	50.0	50.0

电容器 CAPACITOR

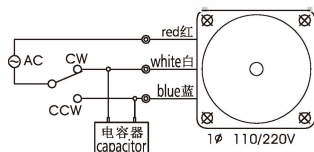


电容量 μF capacity μF	耐压 Voltage	长 L±1	宽 W±1	高 H±1	类型 Type
允许偏差±5% Allowable Deviation±5%	V	mm	mm	mm	引线式 Down-lead
1.8	500	38	14	22	
6.0	250	47	23	36	

齿轮箱型式Model of Gearbox: 3GN□K

频率Frequency	减速比Reduction Ratio		180	200
50Hz	输出轴转速 Output Shaft Speed	r/min	8	7.5
	允许力矩 Allowable Torque	N.m	4.90	4.90
60Hz	输出轴转速 Output Shaft Speed	r/min	10	9
	允许力矩 Allowable Torque	kgf.cm	50.0	50.0

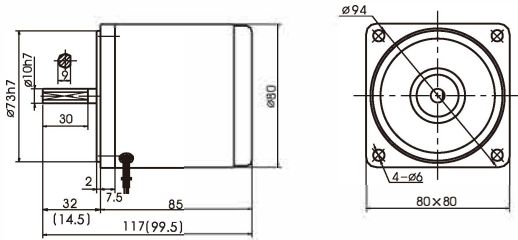
接线图 WIRING DIAGRAM



阻尼电机 REVERSIBLE MOTOR 25W

مشخصات فنی و ابعاد و اندازه الکتروگیربکس های توان 25 وات لحظه ای کار

توجه: با توجه به تنوع برند و تغییر طراحی جزئی در آن ها ، امکان وجود تفاوت جزئی در بعضی از اعداد ارائه شده وجود دارد



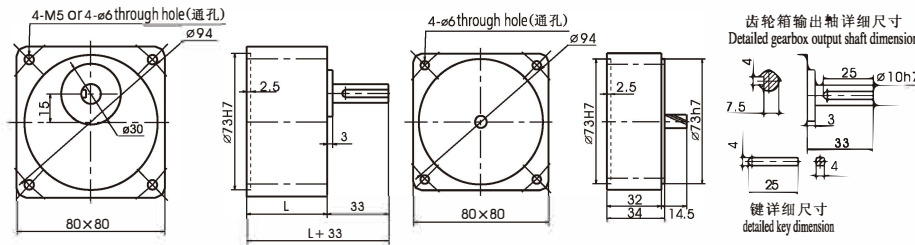
●其中()数字系小齿轮轴电机的数值。 ●The value in the () is the value of small gear shaft motor.

电机特性表 LIST OF MOTOR CHARACTERISTICS

电机型号 Model of Motor		出力 Output	电压 Voltage	频率 Frequency	极数 Poles	额定时间 Duty	额定Rated			起动转矩 Starting Torque		电容容量/耐压 Capacitor/Ve	
光电机 Motor	带齿轴电机 Motor with gear shaft	W	V	Hz	P		转速Speed	电流Current	力矩Torque	N.m	kgf.cm		
				r/min	A		N.m	kgf.cm	N.m	kgf.cm	μF/VAC		
4RK25A-A	4RK25GN-A	25	1ph110	50	4	30Min	1350	0.42	0.18	1.80	0.17	1.65	8.0/250
4RK25A-C	4RK25GN-C	25	1ph220	50	4	30Min	1350	0.28	0.18	1.80	0.20	2.00	2.0/500

●使用电压不同，电容容量也不相同。故应与使用电压相对应，正确使用。●不能正确使用是造成故障的主要原因。订货时，在确认使用电压后，选择正确的型号进行订货。
●The capacitor capacitance will be different under different voltage. A correct capacitor capacitance is required to match the applied voltage. ●Wrong capacitor capacitance is the cause of trouble. You must confirm a correct voltage and select a correct model when your purchase order is placed.

齿轮箱外形尺寸 OVERALL DIMENSION OF GEARBOX



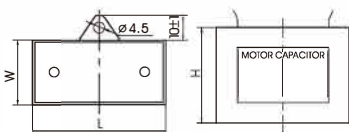
	速比Reduction Ratio	尺寸L(mm)	质量(kg)
齿轮箱 Gearbox	4GN3K-GN20K	32	0.43
	4GN25K-GN50K	43.5	0.57
	4GN60K-GN200K		0.61
中间齿轮箱 Intermediate Gearbox	4GN10X	32	0.43
电机Motor			1.58

齿轮箱允许力矩 ALLOWABLE TORQUE ON GEARBOX

齿轮箱型式Model of Gearbox: 4GN□K

频率Frequency	减速比Reduction Ratio	3	3.6	5	6	7.5	9	10	12.5	15	18	20	25	30	36	40	50	60	75	90	100	120	150	
50Hz	输出轴转速 Output Shaft Speed	r/min	500	417	300	250	200	166	150	120	100	83	75	60	50	41	37	30	25	20	16	15	12	10
	允许力矩 Allowable Torque	N.m	0.42	0.52	0.72	0.86	1.07	1.29	1.43	1.79	2.15	2.58	2.87	3.22	3.87	4.65	5.16	6.45	7.00	7.84	7.84	7.84	7.84	7.84
60Hz	输出轴转速 Output Shaft Speed	r/min	600	500	360	300	240	200	180	144	120	100	90	72	60	50	45	36	30	24	20	18	15	12
	允许力矩 Allowable Torque	N.m	0.35	0.42	0.59	0.70	0.88	1.05	1.17	1.46	1.76	2.11	2.34	2.64	3.17	3.80	4.22	5.28	5.73	7.16	7.84	7.84	7.84	7.84
		kgf.cm	3.59	4.30	5.98	7.20	8.97	10.8	12.0	14.9	17.9	21.5	23.9	26.9	32.3	38.8	43.1	53.9	58.8	73.1	80.0	80.0	80.0	80.0

电容器 CAPACITOR

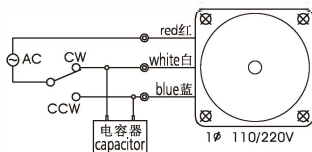


电容容量 μF capacity μF	耐压 Voltage	长 L±1	宽 W±1	高 H±1	类型 Type
允许偏差±5% Allowable Deviation±5%	V	mm	mm	mm	引线式 Down-lead
2.0	500	38	15	28	
8.0	250	47	23	36	

齿轮箱型式Model of Gearbox: 4GN□K

频率Frequency	减速比Reduction Ratio	180	200	250	
50Hz	输出轴转速 Output Shaft Speed	r/min	8	7.5	6
	允许力矩 Allowable Torque	N.m	7.84	7.84	7.84
		kgf.cm	80.0	80.0	80.0
60Hz	输出轴转速 Output Shaft Speed	r/min	10	9	7.2
	允许力矩 Allowable Torque	N.m	7.80	7.80	7.80
		kgf.cm	80.0	80.0	80.0

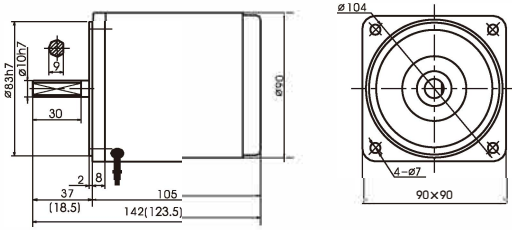
接线图 WIRING DIAGRAM



阻尼电机 REVERSIBLE MOTOR 40W 40 وات مشخصات فنی و ابعاد و اندازه الکتروگیربکس های توان 40 وات

لحظه ای کار

توجه: با توجه به تنوع برند و تغییر طراحی جزئی در آن ها ، امکان وجود تفاوت جزئی در بعضی از اعداد ارائه شده وجود دارد



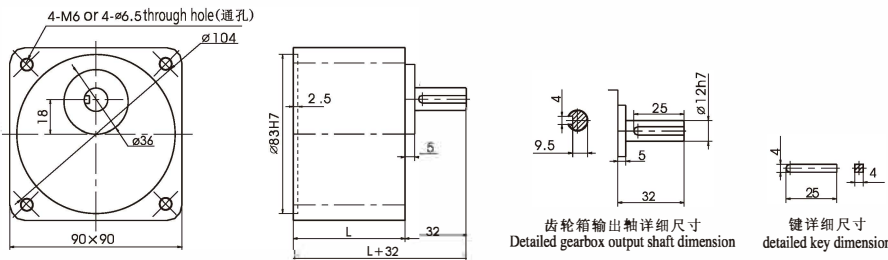
●其中()数字系小齿轮轴电机的数值。 ●The value in the () is the value of small gear shaft motor.

电机特性表 LIST OF MOTOR CHARACTERISTICS

电机型号 Model of Motor		出力 Output	电压 Voltage	频率 Frequency	极数 Poles	额定时间 Duty	额定Rated			启动转矩 Starting Torque		电容容量/耐压 Capacitor/Ve	
光电机 Motor	带齿轴电机 Motor with gear shaft	W	V	Hz	P		转速Speed r/min	电流Current A	力矩Torque N.m kgf.cm	N.m	kgf.cm	μF/VAC	
5RK40A-A	5RK40GN-A	40	1ph110	50	4	30Min	1350	0.68	0.29	2.85	0.30	3.00	12.0/250
5RK40A-C	5RK40GN-C	40	1ph220	50	4	30Min	1350	0.35	0.29	2.85	0.30	3.00	3.0/500

●使用电压不同，电容容量也不相同。故应与使用电压相对应，正确使用。●不能正确使用是造成故障的主要原因。订货时，在确认使用电压后，选择正确的型号进行订货。
●The capacitor capacitance will be different under different voltage. A correct capacitor capacitance is required to match the applied voltage. ●Wrong capacitor capacitance is the cause of trouble. You must confirm a correct voltage and select a correct model when your purchase order is placed.

齿轮箱外形尺寸 OVERALL DIMENSION OF GEARBOX



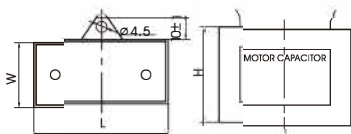
	速比Reduction Ratio	尺寸L(mm)	质量(kg)
齿轮箱 Gearbox	5GN3K-GN15K	42	0.73
	5GN18K-GN36K	60	1.03
	5GN40K-GN200K		1.13
电机Motor			2.35

齿轮箱允许力矩 ALLOWABLE TORQUE ON GEARBOX

齿轮箱型式 Model of Gearbox: 5GN□K

频率Frequency	减速比Reduction Ratio	3	3.6	5	6	7.5	9	10	12.5	15	18	20	25	30	36	40	50	60	75	90	100	120	150	
50Hz	输出轴转速 Output Shaft Speed	r/min	500	417	300	250	200	166	150	120	100	83	75	60	50	41	37	30	25	20	16	15	12	10
	允许力矩 Allowable Torque	N.m	0.68	0.82	1.14	1.37	1.72	2.06	2.29	2.86	3.43	4.13	4.59	5.16	6.20	7.44	8.26	9.80	9.80	9.80	9.80	9.80	9.80	9.80
60Hz	输出轴转速 Output Shaft Speed	r/min	600	500	360	300	240	200	180	144	120	100	90	72	60	50	45	36	30	24	20	18	15	12
	允许力矩 Allowable Torque	N.m	0.58	0.70	0.97	1.16	1.45	1.74	1.93	2.41	2.90	3.48	3.87	4.36	5.23	6.28	6.97	8.72	9.46	9.80	9.80	9.80	9.80	9.80
		kgf.cm	5.92	7.14	9.90	11.8	10.8	17.7	19.7	24.6	29.6	35.5	39.5	44.5	53.4	64.1	71.1	89.0	96.5	100	100	100	100	100

电容器 CAPACITOR

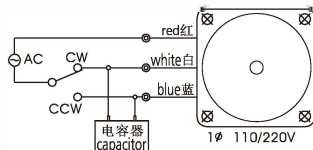


电容容量 μF capacity μF	耐压 Voltage	长 L±1	宽 W±1	高 H±1	类型 Type
允许偏差±5% Allowable Deviation±5%	V	mm	mm	mm	引线式 Down-lead
3.0	500	38	18	29	
12.0	250	58	25	45	

齿轮箱型式 Model of Gearbox: 5GN□K

频率Frequency	减速比Reduction Ratio	180	200	300	500	
50Hz	输出轴转速 Output Shaft Speed	r/min	8	7.5	5	3
	允许力矩 Allowable Torque	N.m	9.80	9.80	9.80	9.80
60Hz	输出轴转速 Output Shaft Speed	r/min	10	9	6	3.6
	允许力矩 Allowable Torque	N.m	9.80	9.80	9.80	9.80
		kgf.cm	100	100	100	100

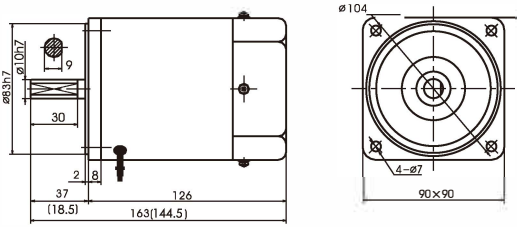
接线图 WIRING DIAGRAM



مشخصات فنی و ابعاد و اندازه الکتروگیربکس های توان 60 وات لحظه ای کار

阻尼电机 REVERSIBLE MOTOR 60W

توجه: با توجه به تنوع برند و تغییر طراحی جزئی در آن ها ، امکان وجود تفاوت جزئی در بعضی از اعداد ارائه شده وجود دارد



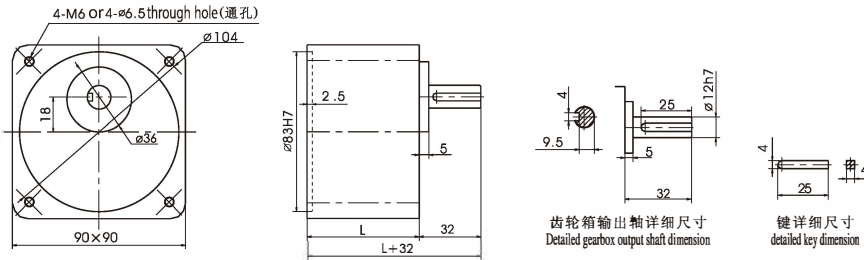
●其中()数字系小齿轮轴电机的数值。 ●The value in the () is the value of small gear shaft motor.

电机特性表 LIST OF MOTOR CHARACTERISTICS

电机型号 Model of Motor		出力 Output	电压 Voltage	频率 Frequency	极数 Poles	额定时间 Duty	额定Rated			启动转矩 Starting Torque		电容容量/耐压 Capacitor/Ve	
光电机 Motor	带齿轴电机 Motor with gear shaft	W	V	Hz	P		转速Speed r/min	电流Current A	力矩Torque N.m kgf.cm	N.m	kgf.cm	μF/VAC	
5RK60A-AF	5RK60GN-AF	60	1ph110	50	4	30Min	1350	1.10	0.44	4.40	0.45	4.50	18.0/250
5RK60A-CF	5RK60GN-CF	60	1ph220	50	4	30Min	1350	0.46	0.44	4.40	0.45	4.50	4.5/500

●使用电压不同，电容容量也不相同。故应和使用电压相对应，正确使用。●不能正确使用是造成故障的主要原因。订货时，在确认使用电压后，选择正确的型号进行订货。
●The capacitor capacitance will be different under different voltage. A correct capacitor capacitance is required to match the applied voltage. ●Wrong capacitor capacitance is the cause of trouble. You must confirm a correct voltage and select a correct model when your purchase order is placed.

齿轮箱外形尺寸 OVERALL DIMENSION OF GEARBOX



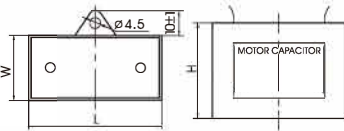
	速比Reduction Ratio	尺寸L(mm)	质量(kg)
齿轮箱 Gearbox	5GN3K-GN15K	42	0.73
	5GN18K-GN36K	60	1.03
	5GN40K-GN200K		1.13
	5GN300K-GN500K		2.70
电机Motor			2.70

齿轮箱允许力矩 ALLOWABLE TORQUE ON GEARBOX

齿轮箱型式 Model of Gearbox: 5GN□K

频率Frequency	减速比Reduction Ratio	3	3.6	5	6	7.5	9	10	12.5	15	18	20	25	30	36	40	50	60	75	90	100	120	150	
50Hz	输出轴转速 Output Shaft Speed	r/min	500	417	300	250	200	166	150	120	100	83	75	60	50	41	37	30	25	20	16	15	12	10
	允许力矩 Allowable Torque	N.m	1.03	1.24	1.72	2.6	2.58	3.10	3.10	3.88	4.65	5.38	5.60	7.01	8.41	9.80	9.80	9.80	9.80	9.80	9.80	9.80	9.80	9.80
60Hz	输出轴转速 Output Shaft Speed	r/min	600	500	360	300	240	200	180	144	120	100	90	72	60	50	45	36	30	24	20	18	15	12
	允许力矩 Allowable Torque	N.m	0.9	1.08	1.50	1.80	2.23	2.70	2.70	3.38	4.05	4.88	4.88	6.10	7.33	8.79	9.80	9.80	9.80	9.80	9.80	9.80	9.80	9.80
		kgf.cm	9.18	11.0	15.3	18.4	23.0	27.6	27.6	34.5	41.3	49.5	49.5	62.2	74.7	90.0	100	100	100	100	100	100	100	100

电容器 CAPACITOR

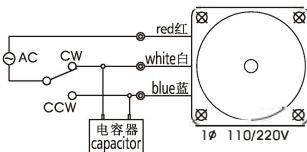


电容容量 μF capacity μF 允许偏差±5%	耐压 Voltage	长 L±1	宽 W±1	高 H±1	类型 Type
4.5	500	49	21	29	引线式 Down-lead
18.0	250	58	25	45	

齿轮箱型式 Model of Gearbox: 5GN□K

频率Frequency	减速比Reduction Ratio	180	200	300	500	
50Hz	输出轴转速 Output Shaft Speed	r/min	8	7.5	5	3
	允许力矩 Allowable Torque	N.m	9.80	9.80	9.80	9.80
60Hz	输出轴转速 Output Shaft Speed	r/min	10	9	6	3.6
	允许力矩 Allowable Torque	N.m	9.80	9.80	9.80	9.80
		kgf.cm	100	100	100	100

接线图 WIRING DIAGRAM



توجه: مشخصات، جدول، اشکال و تمام اطلاعات مندرج در این برگه، انحصاراً در اختیار ارائه دهنده محصول بوده و بدون اطلاع قبلی، قابل تغییر می باشد

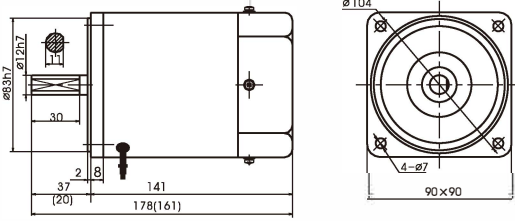
This manual may modify, when necessary because of improvement of the product, modification, or changes in specification, this manual is subject to change without notice

阻尼电机 REVERSIBLE MOTOR

90W

مشخصات فنی و ابعاد و اندازه الکتروگیربکس های توان 90 وات
لحظه ای کار

توجه: با توجه به تنوع برند و تغییر طراحی جزئی در آن ها ، امکان وجود تفاوت جزئی در بعضی از اعداد ارائه شده وجود دارد



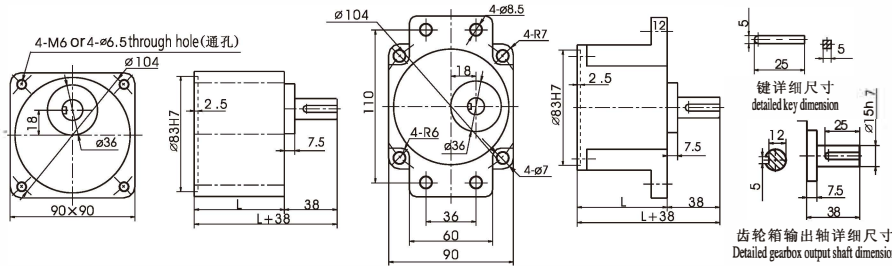
●其中()数字系小齿轮轴电机的数值。 ●The value in the () is the value of small gear shaft motor.

电机特性表 LIST OF MOTOR CHARACTERISTICS

电机型号 Model of Motor		出力 Output	电压 Voltage	频率 Frequency	极数 Poles	额定时间 Duty	额定Rated				启动转矩 Starting Torque		电容量/耐压 Capacitor/Ve
光电机 Motor	带齿轴电机 Motor with gear shaft	W	V	Hz	P		转速Speed r/min	电流Current A	力矩Torque N.m kgf.cm		N.m	kgf.cm	μF/VAC
5RK90A-AF	5RK90GU-AF	90	1ph110	50	4	30Min	1350	1.55	0.64	6.40	0.48	4.80	25.0/250
5RK90A-CF	5RK90GU-CF	90	1ph220	50	4	30Min	1350	0.65	0.64	6.40	0.61	6.10	6.0/500

●使用电压不同，电容量也不相同。故应与使用电压相对应，正确使用。●不能正确使用是造成故障的主要原因。订货时，在确认使用电压后，选择正确的型号进行订货。
●The capacitor capacitance will be different under different voltage. A correct capacitor capacitance is required to match the applied voltage. ●Wrong capacitor capacitance is the cause of trouble. You must confirm a correct voltage and select a correct model when your purchase order is placed.

齿轮箱外形尺寸 OVERALL DIMENSION OF GEARBOX



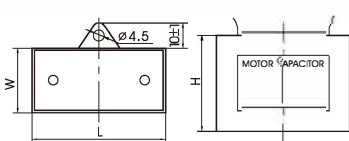
	速比Reduction Ratio	尺寸L(mm)	质量(kg)
齿轮箱 Gearbox	5GU3K-GU9K	65	1.21
	5GU10K-GU18K		1.30
	5GU20K-GU75K		1.40
	5GU90K-GU200K		1.45
	5GU300K-GU500K		
电机Motor			3.21

齿轮箱允许力矩 ALLOWABLE TORQUE ON GEARBOX

齿轮箱型式 Model of Gearbox: 5GU□K

频率Frequency	减速比Reduction Ratio	3	3.6	5	6	7.5	9	10	12.5	15	18	20	25	30	36	40	50	60	75	90	100	120	150	
50Hz	输出轴转速 Output Shaft Speed	r/min	500	417	300	250	200	166	150	120	100	83	75	60	50	41	37	30	25	20	16	15	12	10
	允许力矩 Allowable Torque	N.m	1.55	1.86	2.58	3.10	3.87	4.64	4.65	5.81	6.98	8.37	8.40	10.5	12.6	15.1	16.8	19.6	19.6	19.6	19.6	19.6	19.6	19.6
60Hz	输出轴转速 Output Shaft Speed	r/min	600	500	360	300	240	200	180	144	120	100	90	72	60	50	45	36	30	24	20	18	15	12
	允许力矩 Allowable Torque	N.m	1.35	1.62	2.25	2.70	3.37	4.04	4.05	5.06	6.07	7.29	7.32	9.15	11.0	13.2	14.6	18.3	19.6	19.6	19.6	19.6	19.6	19.6
		kgf.cm	13.8	16.5	23.0	27.6	34.4	41.2	41.3	51.6	61.9	74.4	74.7	93.4	112	135	149	187	200	200	200	200	200	200

电容器 CAPACITOR

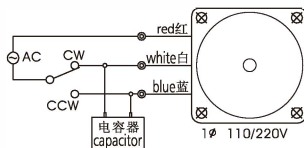


电容量 μF capacity μF	耐压 Voltage	长 L±1	宽 W±1	高 H±1	类型 Type
允许偏差±5% Allowable Deviation±5%	V	mm	mm	mm	引线式 Down-lead
6.0	500	47	23	36	
25.0	250	58	23	39	

齿轮箱型式 Model of Gearbox: 5GU□K

频率Frequency	减速比Reduction Ratio	180	200	300	500	
50Hz	输出轴转速 Output Shaft Speed	r/min	8	7.5	5	3
	允许力矩 Allowable Torque	N.m	19.6	19.6	19.6	19.6
60Hz	输出轴转速 Output Shaft Speed	r/min	10	9	6	3.6
	允许力矩 Allowable Torque	N.m	19.6	19.6	19.6	19.6
		kgf.cm	200	200	200	200

接线图 WIRING DIAGRAM



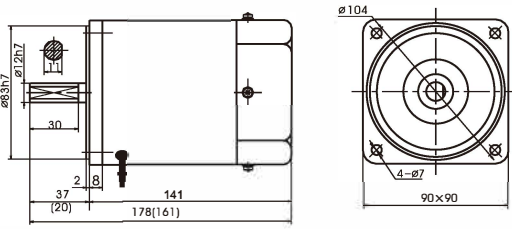
توجه: مشخصات، جداول، اشکال و تمام اطلاعات مندرج در این برگه، انحصاراً در اختیار ارائه دهنده محصول بوده و بدون اطلاع قبلی، قابل تغییر می باشد.

This manual may modify, when necessary because of improvement of the product, modification, or changes in specification, this manual is subject to change without notice

阻尼电机 REVERSIBLE MOTOR 120W

مشخصات فنی و ابعاد و اندازه الکتروگیربکس های توان 120 وات لحظه ای کار

توجه: با توجه به تنوع برند و تغییر طراحی جزئی در آن ها ، امکان وجود تفاوت جزئی در بعضی از اعداد ارائه شده وجود دارد



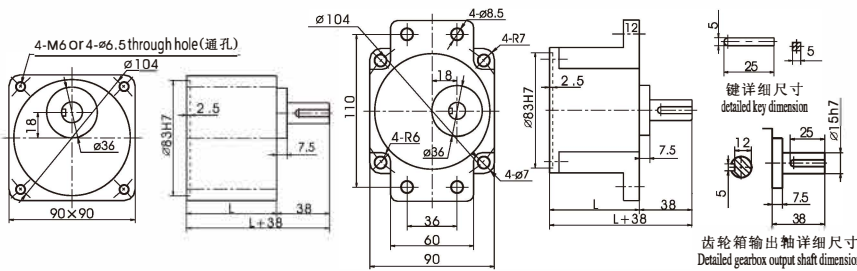
●其中()数字系小齿轮轴电机的数值。 ●The value in the () is the value of small gear shaft motor.

电机特性表 LIST OF MOTOR CHARACTERISTICS

电机型号 Model of Motor		出力 Output	电压 Voltage	频率 Frequency	极数 Poles	额定时间 Duty	额定Rated				启动转矩 Starting Torque		电容量/耐压 Capacitor/Ve
光电机 Motor	带齿轴电机 Motor with gear shaft	W	V	Hz	P		转速Speed r/min	电流Current A	力矩Torque N.m	kgf.cm	N.m	kgf.cm	
5RK120A-AF	5RK120GU-AF	120	1ph110	50	4	30Min	1250	2.10	0.90	9.00	0.78	7.80	30.0/250
5RK120A-CF	5RK120GU-CF	120	1ph220	50	4	30Min	1300	1.10	0.87	8.65	0.85	8.50	7.0/500

●使用电压不同，电容量也不同。故应与使用电压相对应，正确使用。●不能正确使用是造成故障的主要原因。订货时，在确认使用电压后，选择正确的型号进行订货。
●The capacitor capacitance will be different under different voltage. A correct capacitor capacitance is required to match the applied voltage. ●Wrong capacitor capacitance is the cause of trouble. You must confirm a correct voltage and select a correct model when your purchase order is placed.

齿轮箱外形尺寸 OVERALL DIMENSION OF GEARBOX



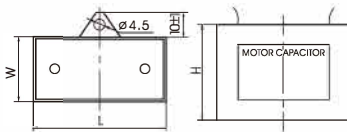
	速比Reduction Ratio	尺寸L(mm)	质量(kg)
齿轮箱 Gearbox	5GU3K-GU9K	65	1.21
	5GU10K-GU18K		1.30
	5GU20K-GU75K		1.40
	5GU90K-GU200K		1.45
	5GU300K-GU500K		3.21
电机Motor			3.21

齿轮箱允许力矩 ALLOWABLE TORQUE ON GEARBOX

齿轮箱型式 Model of Gearbox: 5GU□K

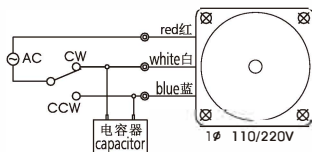
频率Frequency	速比Reduction Ratio	3	3.6	5	6	7.5	9	10	12.5	15	18	20	25	30	36	40	50	60	75	90	100	120	150	
50Hz	输出轴转速 Output Shaft Speed	r/min	500	417	300	250	200	166	150	120	100	83	75	60	50	41	37	30	25	20	16	15	12	10
	允许力矩 Allowable Torque	N.m	2.14	2.57	3.57	4.29	5.38	6.43	8.05	9.66	11.6	11.6	14.6	17.5	19.6	19.6	19.6	19.6	19.6	19.6	19.6	19.6	19.6	19.6
60Hz	输出轴转速 Output Shaft Speed	r/min	600	500	360	300	240	200	180	144	120	100	90	72	60	50	45	36	30	24	20	18	15	12
	允许力矩 Allowable Torque	N.m	1.80	2.16	3.00	3.60	4.49	5.39	6.75	8.10	9.72	9.72	12.2	14.6	17.6	19.5	19.6	19.6	19.6	19.6	19.6	19.6	19.6	19.6
		kgf.cm	18.4	22.0	30.6	36.7	45.8	55.0	68.9	82.7	99.2	99.2	124	149	180	199	200	200	200	200	200	200	200	200

电容器 CAPACITOR



电容量 μF capacity μF	耐压 Voltage	长 L±1	宽 W±1	高 H±1	类型 Type
允许偏差±5% Allowable Deviation±5%	V	mm	mm	mm	引线式 Down-lead
7.0	500	47	23	36	
30.0	250	58	23	39	

接线图 WIRING DIAGRAM



齿轮箱型式 Model of Gearbox: 5GU□K

频率Frequency	速比Reduction Ratio	180	200	300	500	
50Hz	输出轴转速 Output Shaft Speed	r/min	8	7.5	5	3
	允许力矩 Allowable Torque	N.m	19.6	19.6	19.6	19.6
60Hz	输出轴转速 Output Shaft Speed	r/min	10	9	6	3.6
	允许力矩 Allowable Torque	N.m	19.6	19.6	19.6	19.6
		kgf.cm	200	200	200	200