

IE1

SIMOTICS GP/SD 1LE1 standard motors
Motors with IE1 Standard Efficiency

Self-ventilated or forced-air cooled motors · Cast-iron series 1LE1502 Basic Line

Selection and ordering data (continued)

توجه: مشخصات در سری قدیمی و سری جدید مشابه یکدیگرند (GP 1LA7 & 1LE1)

Operating values at rated power														Cast-iron series			
P_{rated} 50 Hz/ P50	P_{rated} 60 Hz/ P60 1)	Frame size	n_{rated} 50 Hz	T_{rated} 50 Hz	η_{rated} 50 Hz, 4/4	η_{rated} 50 Hz, 3/4	η_{rated} 50 Hz, 2/4	$\cos\phi_{rated}$ 50 Hz, 4/4	I_{rated} 50 Hz, 400 V	$T_{LR}/$ T_{rated} 50 Hz	$I_{LR}/$ I_{rated} 50 Hz	$T_{\beta}/$ T_{rated} 50 Hz	L_{pFA} 50 Hz	L_{WA} 50 Hz	1LE1502 – Basic Line	$m_{IM B3}$	J
kW	kW	FS	rpm	Nm	%	%	%	A							Article No.	kg	kgm ²
<ul style="list-style-type: none"> • Cooling: Self-ventilated (IC 411) or with order code F90 forced-air cooled without external fan and fan cover (IC 418) • Efficiency according to IEC 60034-30-1: IE1 Standard Efficiency, service factor (SF) 1.1 • Insulation: Thermal class 155 (temperature class F), IP55 degree of protection, utilization in accordance with thermal class 130 (temperature class B) 																	
4-pole: 1500 rpm at 50 Hz, 1800 rpm at 60 Hz ¹⁾																	
2.2	2.55	100 L	1425	15	79.7	80.3	78.1	0.81	4.9	2.3	5.1	2.7	60	72	1LE1502-1AB4	29	0.0059
3	3.45	100 L	1425	20	81.5	82.6	81.5	0.85	6.3	2.4	5.4	2.6	60	72	1LE1502-1AB5	33	0.0078
4	4.55	112 M	1435	27	83.1	84.3	83.7	0.83	8.4	2.5	6.1	2.9	57	70	1LE1502-1BB2	38	0.010
5.5	56.3	132 S	1450	36	84.7	85.3	84.2	0.82	11.4	2.3	5.7	2.7	64	76	1LE1502-1CB0	56	0.019
7.5	8.6	132 M	1450	49	86.0	86.5	85.4	0.82	15.4	2.6	6.6	3.1	64	76	1LE1502-1CB2	59	0.024
11	12.6	160 M	1460	72	87.6	87.9	86.7	0.81	22.5	2.7	6.9	3.3	70	82	1LE1502-1DB2	89	0.044
15	17.3	160 L	1460	98	88.7	89.1	88.0	0.82	30.0	3.0	7.5	3.6	70	82	1LE1502-1DB4	105	0.056
18.5	21.3	180 M	1468	120	89.3	90.2	90.2	0.85	35	2.2	7.3	3.1	63	76	1LE1502-1EB2	170	0.13
22	25.3	180 L	1465	143	89.9	90.8	90.7	0.83	42.5	2.7	8	3.6	63	76	1LE1502-1EB4	170	0.13
30	34.5	200 L	1472	195	90.7	91.5	91.4	0.83	58	2.3	6.9	3.1	64	78	1LE1502-2AB5	220	0.2
37	42.5	225 S	1475	240	91.2	91.6	91.1	0.85	69	2.3	7	3.2	69	83	1LE1502-2BB0	260	0.37
45	52	225 M	1475	291	91.7	92.1	91.7	0.86	82	2.6	7.2	3.2	69	82	1LE1502-2BB2	290	0.45
55	63	250 M	1475	356	92.1	92.5	92.1	0.85	101	2.4	6.1	2.6	69	83	1LE1502-2CB2	370	0.69
75	86	280 S	1485	482	92.7	92.9	92.2	0.85	137	2.3	7	2.8	75	89	1LE1502-2DB0	500	1.2
90	104	280 M	1482	580	93	93.4	93.1	0.87	161	2.2	6.5	2.8	73	87	1LE1502-2DB2	560	1.4
110	127	315 S	1488	706	93.3	93.4	92.8	0.84	205	2.3	6.5	2.7	76	90	1LE1502-3AB0	690	1.9
132	152	315 M	1488	847	93.5	93.7	93.3	0.85	240	2.5	6.8	2.7	76	91	1LE1502-3AB2	760	2.2
160	184	315 L	1486	1028	93.8	93.9	93.5	0.86	285	2.7	7.2	2.7	76	90	1LE1502-3AB4	940	2.9
200	230	315 L	1486	1285	94	94.2	94	0.87	355	2.5	6.9	2.7	76	91	1LE1502-3AB5	1140	3.5
Voltages ²⁾														Version		Order code	
50 Hz 230 VΔ/400 VY				60 Hz ¹⁾ 460 VY				Standard		2 2		-					
50 Hz 400 VΔ/690 VY				60 Hz ¹⁾ 460 VΔ				Standard		3 4		-					
50 Hz 500 VY								Without additional charge		2 7		-					
50 Hz 500 VΔ								Without additional charge		4 0		-					
For other voltages ¹⁾ and more information, see from page 2/92														9 0		...	
Types of construction														Version		Order code	
Without flange				IM B3 ³⁾				Standard		A		-					
With flange				IM B5 ³⁾				With additional charge		F		-					
With flange				IM B14 ³⁾				With additional charge		K		-					
For other types of construction and more information, see from page 2/99																...	
Motor protection														Version		Order code	
Without								Standard		A		-					
PTC thermistor with 3 temperature sensors								With additional charge		B		-					
For other motor protection and more information, see from page 2/108																...	
Terminal box position														Version		Order code(s)	
Terminal box at top								Standard		4							
For other terminal box positions and more information, see from page 2/111																	
Special versions																Order code(s)	
Forced-air cooled motors w/o ext. fan/fan cover (IC 418)														1LE1502-		-Z F90 +. . . +. . .	
For options, see from page 2/120														1LE1502-		-Z . . . +. . . +. . .	

¹⁾ Operating values at rated power for 60 Hz are stored in the Drive Technology Configurator (DT Configurator; see Appendix, "Tools and engineering").

²⁾ Parallel supply lines are required in the case of connection to ≤ 240 V. For frame size 315 with connection to ≤ 240 V, due to the high current, a drilled, removable entry plate (order code **R52**) or a larger terminal box (order code **R50**) can be used. Order codes **R52** and **R50** alter the motor dimensions.

³⁾ Types derived from IM B3 (IM B6/7/8, IM V6 and IM V5), from IM B5 (IM V3 and IM V1) and from IM B14 (IM V19 and IM V18) are possible, provided that no requirement exists for stamping of the type on the rating plate. The basic type IM B3, IM B5 or IM B14 is stamped as standard on the rating plate. If mounted in a different position, the position must be specified to ensure that the condensation drainage holes are positioned correctly.

Selection and ordering data

توجه: مشخصات در سری قدیمی و سری جدید مشابه یکدیگرند (GP 1LA7 & 1LE1)

P _{rated} 50 Hz/ P50	P _{rated} 60 Hz/ P60 1)	Frame size	Operating values at rated power											Cast-iron series					
			n _{rated} 50 Hz	T _{rated} 50 Hz	η _{rated} 50 Hz	η _{rated} 50 Hz	η _{rated} 50 Hz	η _{rated} 50 Hz	cosφ _{rated} 50 Hz	I _{rated} 50 Hz	T _{LR} / I _{LR} 50 Hz	I _{LR} / I _{rated} 50 Hz	T _B / T _{rated} 50 Hz	L _{pfA} 50 Hz	L _{WA} 50 Hz	1LE1502 – Basic Line	m _{IM} B3	J	
kW	kW	FS	rpm	Nm	%	%	%	%	A	A	A	A	A	A	A	A	Article No.	kg	kgm ²
<ul style="list-style-type: none"> • Cooling: Self-ventilated (IC 411) or with order code F90 forced-air cooled without external fan and fan cover (IC 418) • Efficiency according to IEC 60034-30-1: IE1 Standard Efficiency, service factor (SF) 1.1 • Insulation: Thermal class 155 (temperature class F), IP55 degree of protection, utilization in accordance with thermal class 130 (temperature class B) 																			
2-pole: 3000 rpm at 50 Hz, 3600 rpm at 60 Hz ¹⁾																			
3	3.45	100 L	2835	10	81.5	83.2	82.8	0.87	6.1	3.2	6.4	3.5	66	80	1LE1502-1AA4	31	0.0034		
4	4.55	112 M	2935	13	83.1	83.0	80.8	0.85	8.2	3.3	8.3	4.2	70	83	1LE1502-1BA2	36	0.0067		
5.5	6.3	132 S	2910	18	84.7	85.9	85.7	0.88	10.7	1.8	5.7	2.6	68	82	1LE1502-1CA0	53	0.013		
7.5	8.6	132 S	2925	24	86.0	86.7	86.1	0.88	14.3	2.2	6.8	3.1	68	82	1LE1502-1CA1	58	0.016		
11	12.6	160 M	2925	36	87.6	88.0	87.1	0.86	21.0	2.0	5.7	2.7	73	86	1LE1502-1DA2	87	0.030		
15	18	160 M	2935	49	88.7	88.9	87.7	0.85	28.5	2.4	6.8	3.2	73	86	1LE1502-1DA3	95	0.036		
18.5	22	160 L	2935	60	89.3	89.7	89.3	0.87	34.5	2.7	7.6	3.4	73	86	1LE1502-1DA4	105	0.044		
22	24.5	180 M	2945	71	89.9	90.6	90.4	0.87	40.5	2.5	7.7	3.5	72	85	1LE1502-1EA2	150	0.069		
30	33.5	200 L	2960	97	90.7	90.9	90.2	0.79	60	2.5	7.3	3.6	72	85	1LE1502-2AA4	195	0.124		
37	41.5	200 L	2955	120	91.2	91.6	91.2	0.88	67	2.7	8.2	3.5	72	85	1LE1502-2AA5	230	0.15		
45	51	225 M	2960	145	91.7	92	91.6	0.88	80	2.3	6.7	3	73	86	1LE1502-2BA2	280	0.22		
55	62	250 M	2970	177	92.1	92.3	91.4	0.88	98	2	6.7	2.9	77	91	1LE1502-2CA2	360	0.4		
75	84	280 S	2975	241	92.7	92.5	91.3	0.86	136	2.2	6.8	3	78	92	1LE1502-2DA0	470	0.72		
90	101	280 M	2975	289	93	93.1	92.4	0.88	159	2.5	7.1	3.1	76	89	1LE1502-2DA2	530	0.83		
110	123	315 S	2982	352	93.3	92.9	91.5	0.86	198	2.3	7.5	3.3	80	94	1LE1502-3AA0	680	1.2		
132	148	315 M	2982	423	93.5	93.2	92.5	0.89	230	2.3	7.6	3	80	94	1LE1502-3AA2	740	1.4		
160	180	315 L	2982	512	93.8	93.6	93.1	0.91	270	2.3	7.4	2.9	80	94	1LE1502-3AA4	880	1.6		
200	224	315 L	2982	640	94	93.9	93.5	0.92	335	2.2	7.1	2.8	80	94	1LE1502-3AA5	1000	2.1		
Voltages ²⁾										Version				Order code					
50 Hz 230 VΔ/400 VY			60 Hz ¹⁾ 460 VY			Standard		2 2		-		-							
50 Hz 400 VΔ/690 VY			60 Hz ¹⁾ 460 VΔ			Standard		3 4		-		-							
50 Hz 500 VY						Without additional charge		2 7		-		-							
50 Hz 500 VΔ						Without additional charge		4 0		-		-							
For other voltages ¹⁾ and more information, see from page 2/92										9 0		...							
Types of construction										Version		Order code							
Without flange			IM B3 ³⁾			Standard		A		-		-							
With flange			IM B5 ³⁾			With additional charge		F		-		-							
With flange			IM B14 ³⁾			With additional charge		K		-		-							
For other types of construction and more information, see from page 2/99										B		...							
Motor protection										Version		Order code							
Without						Standard		A		-		-							
PTC thermistor with 3 temperature sensors						With additional charge		B		-		-							
For other motor protection and more information, see from page 2/108										B		...							
Terminal box position										Version		Order code(s)							
Terminal box at top						Standard		4											
For other terminal box positions and more information, see from page 2/111																			
Special versions												Order code(s)							
Forced-air cooled motors w/o ext. fan/fan cover (IC 418)										1LE1502-....		-Z F90 +...+...+...							
For options, see from page 2/120										1LE1502-....		-Z ...+...+...+...							

¹⁾ Operating values at rated power for 60 Hz are stored in the Drive Technology Configurator (DT Configurator; see Appendix, "Tools and engineering").

²⁾ Parallel supply lines are required in the case of connection to ≤ 240 V. For frame size 315 with connection to ≤ 240 V, due to the high current, a drilled, removable entry plate (order code **R52**) or a larger terminal box (order code **R50**) can be used. Order codes **R52** and **R50** alter the motor dimensions.

³⁾ Types derived from IM B3 (IM B6/7/8, IM V6 and IM V5), from IM B5 (IM V3 and IM V1) and from IM B14 (IM V19 and IM V18) are possible, provided that no requirement exists for stamping of the type on the rating plate. The basic type IM B3, IM B5 or IM B14 is stamped as standard on the rating plate. If mounted in a different position, the position must be specified to ensure that the condensation drainage holes are positioned correctly.

مشخصات فنی الکتروموتورهای زیمنس 900 دور پوسته چدن

SIMOTICS GP/SD 1LE1 standard motors

Motors with IE1 Standard Efficiency

IE1

Self-ventilated or forced-air cooled motors · Cast-iron series 1LE1502 Basic Line

Selection and ordering data (continued)

توجه: مشخصات در سری قدیمی و سری جدید مشابه یکدیگرند (GP 1LA7 & 1LE1)

P _{rated} 50 Hz/ P50	P _{rated} 60 Hz/ P60 1)	Frame size	Operating values at rated power											Cast-iron series				
			n _{rated} 50 Hz	T _{rated} 50 Hz	η _{rated} 50 Hz	η _{rated} 50 Hz	η _{rated} 50 Hz	η _{rated} 50 Hz	cosφ _{rated} 50 Hz	I _{rated} 50 Hz	T _{LR} / I _{rated} 50 Hz	I _{LR} / I _{rated} 50 Hz	T _B / I _{rated} 50 Hz	L _{pfA} 50 Hz	L _{WA} 50 Hz	1LE1502 – Basic Line	m _{IM B3}	J
kW	kW	FS	rpm	Nm	%	%	%	A	A	A	A	A	A	A	A	Article No.	kg	kgm ²
<ul style="list-style-type: none"> • Cooling: Self-ventilated (IC 411) or with order code F90 forced-air cooled without external fan and fan cover (IC 418) • Efficiency according to IEC 60034-30-1: IE1 Standard Efficiency, service factor (SF) 1.1 • Insulation: Thermal class 155 (temperature class F), IP55 degree of protection, utilization in accordance with thermal class 130 (temperature class B) 																		
6-pole: 1000 rpm at 50 Hz, 1200 rpm at 60 Hz ¹⁾																		
1.5	1.75	100 L	940	15	75.2	75.6	72.3	0.74	3.9	2	4	2.2	59	71	1LE1502-1AC4	30	0.0065	
2.2	2.55	112 M	940	22	77.7	78.5	76.3	0.72	5.7	2.6	4.6	2.7	59	71	1LE1502-1BC2	37	0.0092	
3	3.45	132 S	955	30	79.7	79.9	77.1	0.74	7.3	2	4.6	2.6	65	78	1LE1502-1CC0	52	0.017	
4	4.55	132 M	955	40	81.4	82.6	81.9	0.76	9.3	2.3	5.2	2.6	65	78	1LE1502-1CC2	57	0.021	
5.5	6.3	132 M	955	55	83.1	84.0	83.0	0.75	12.7	2.7	5.7	3.0	65	78	1LE1502-1CC3	66	0.027	
7.5	8.6	160 M	970	74	84.7	85.4	85.0	0.73	17.5	2.1	5.5	2.9	67	79	1LE1502-1DC2	100	0.056	
11	12.6	160 L	965	109	86.4	86.8	85.9	0.77	24	1.9	5.9	2.7	67	79	1LE1502-1DC4	120	0.078	
15	18	180 L	975	147	87.7	88.5	87.9	0.77	32	2.3	6.1	3	56	69	1LE1502-1EC4	155	0.17	
18.5	22	200 L	978	181	88.6	89.8	89.8	0.79	38	2.5	6.3	2.6	59	72	1LE1502-2AC4	200	0.25	
22	26.5	200 L	980	214	89.2	90	89.6	0.79	45	2.8	6.8	2.9	59	72	1LE1502-2AC5	220	0.3	
30	36	225 M	978	293	90.2	91	90.7	0.82	59	2.7	6	2.5	65	77	1LE1502-2BC2	270	0.49	
37	44.5	250 M	980	361	90.8	91.5	91.3	0.82	72	2.7	6	2.4	63	77	1LE1502-2CC2	330	0.76	
45	54	280 S	986	436	91.4	92	91.6	0.84	85	2.6	7	2.6	63	77	1LE1502-2DC0	440	1.1	
55	66	280 M	986	533	91.9	92.5	92.6	0.85	102	2.6	6.7	2.6	63	77	1LE1502-2DC2	500	1.3	
75	90	315 S	988	725	92.6	92.8	92.1	0.83	141	2.5	7.1	2.7	62	77	1LE1502-3AC0	660	2.1	
90	108	315 M	988	870	92.9	93.2	92.8	0.83	168	2.6	7.3	2.6	61	77	1LE1502-3AC2	740	2.5	
110	132	315 L	988	1063	93.3	93.6	93.4	0.86	198	2.6	6.8	2.8	61	78	1LE1502-3AC4	880	3.2	
132	158	315 L	988	1276	93.5	93.7	93.4	0.86	235	3	7.5	2.9	61	78	1LE1502-3AC5	1030	4	
160	192	315 L	988	1546	93.8	93.9	93.6	0.86	285	3.1	7.7	3	64	79	1LE1502-3AC6	1160	4.7	
Voltsages ²⁾																		
50 Hz 230 VΔ/400 VY			60 Hz ¹⁾ 460 VY			Standard			2			2			Order code			
50 Hz 400 VΔ/690 VY			60 Hz ¹⁾ 460 VΔ			Standard			3			4			-			
50 Hz 500 VY						Without additional charge			2			7			-			
50 Hz 500 VΔ						Without additional charge			4			0			-			
For other voltsages ¹⁾ and more information, see from page 2/92									9			0			...			
Types of construction																		
Without flange			IM B3 ³⁾			Standard			A			F			Order code			
With flange			IM B5 ³⁾			With additional charge			A			K			-			
With flange			IM B14 ³⁾			With additional charge			A			K			-			
For other types of construction and more information, see from page 2/99															...			
Motor protection																		
Without						Standard			A			B			Order code			
PTC thermistor with 3 temperature sensors						With additional charge			A			B			-			
For other motor protection and more information, see from page 2/108															...			
Terminal box position																		
Terminal box at top						Standard			4						Order code(s)			
For other terminal box positions and more information, see from page 2/111																		
Special versions																		
Forced-air cooled motors w/o ext. fan/fan cover (IC 418)															1LE1502-...-Z F90+...+...+...			
For options, see from page 2/120															1LE1502-...-Z...+...+...+...			

¹⁾ Operating values at rated power for 60 Hz are stored in the Drive Technology Configurator (DT Configurator; see Appendix, "Tools and engineering").

²⁾ Parallel supply lines are required in the case of connection to ≤ 240 V. For frame size 315 with connection to ≤ 240 V, due to the high current, a drilled, removable entry plate (order code **R52**) or a larger terminal box (order code **R50**) can be used. Order codes **R52** and **R50** alter the motor dimensions.

³⁾ Types derived from IM B3 (IM B6/7/8, IM V6 and IM V5), from IM B5 (IM V3 and IM V1) and from IM B14 (IM V19 and IM V18) are possible, provided that no requirement exists for stamping of the type on the rating plate. The basic type IM B3, IM B5 or IM B14 is stamped as standard on the rating plate. If mounted in a different position, the position must be specified to ensure that the condensation drainage holes are positioned correctly.

IE1

Selection and ordering data (continued)

توجه: مشخصات در سری قدیمی و سری جدید مشابه یکدیگرند (GP 1LA7 & 1LE1)

Operating values at rated power														Cast-iron series			
P_{rated} 50 Hz/ P50	P_{rated} 60 Hz/ P60 1)	Frame size	n_{rated} 50 Hz	T_{rated} 50 Hz	η_{rated} 50 Hz, 4/4	η_{rated} 50 Hz, 3/4	η_{rated} 50 Hz, 2/4	$\cos\phi_{rated}$ 50 Hz, 4/4	I_{rated} 50 Hz, 400 V	$T_{LR}/$ T_{rated} 50 Hz	$I_{LR}/$ I_{rated} 50 Hz	$T_{\beta}/$ T_{rated} 50 Hz	L_{pfA} 50 Hz	L_{WA} 50 Hz	1LE1502 – Basic Line	$m_{IM B3}$	J
kW	kW	FS	rpm	Nm	%	%	%	A							Article No.	kg	kgm ²
<ul style="list-style-type: none"> • Cooling: Self-ventilated (IC 411) or with order code F90 forced-air cooled without external fan and fan cover (IC 418) • Efficiency according to IEC 60034-30-1: IE1 Standard Efficiency, service factor (SF) 1.1 • Insulation: Thermal class 155 (temperature class F), IP55 degree of protection, utilization in accordance with thermal class 130 (temperature class B) 																	
8-pole: 750 rpm at 50 Hz, 900 rpm at 60 Hz ¹⁾																	
0.75	0.86	100 L	705	10	61.2	58.1	50.5	0.62	2.85	1.9	3	2.2	64	72 ⁴⁾	1LE1502-1AD4	28	0.0056
1.1	1.27	100 L	690	15	66.5	66.0	61.8	0.61	3.90	2.0	3.2	2.3	64	72 ⁴⁾	1LE1502-1AD5	33	0.0078
1.5	1.75	112 M	700	20	70.2	71.1	68.7	0.66	4.65	1.9	3.5	2.1	67	78 ⁴⁾	1LE1502-1BD2	42	0.0094
2.2	2.55	132 S	715	29	74.2	74.1	71.4	0.66	6.5	1.7	3.9	2.4	63	75	1LE1502-1CD0	60	0.019
3	3.45	132 M	715	40	77	77.4	75.2	0.68	8.3	1.8	3.9	2.2	63	75	1LE1502-1CD2	62	0.024
4	4.55	160 M	720	53	79.2	79.3	76.3	0.67	10.9	1.6	4.1	2.3	63	75	1LE1502-1DD2	89	0.044
5.5	6.3	160 M	720	73	81.4	81.9	80.3	0.68	14.3	1.6	4	2.2	63	75	1LE1502-1DD3	96	0.056
7.5	8.6	160 L	715	100	83.1	83.7	82.4	0.69	18.9	1.7	3.8	2.2	63	75	1LE1502-1DD4	120	0.077
11	13.2	180 L	720	146	85	86.2	86	0.7	26.5	1.9	5	2.5	65	78	1LE1502-1ED4	160	0.20
15	18	200 L	718	199	86.2	87.9	88.4	0.75	33.5	2.5	5.5	2.9	55	69	1LE1502-2AD5	220	0.3
18.5	22	225 S	730	242	86.9	87.8	87.4	0.78	39.5	2.2	5.5	2.7	59	72	1LE1502-2BD0	250	0.43
22	26.5	225 M	730	288	87.4	88.3	88.1	0.79	46	2.3	5.5	2.7	60	73	1LE1502-2BD2	270	0.5
30	36	250 M	732	391	88.3	89.2	89.2	0.81	61	2.3	5.5	2.6	54	68	1LE1502-2CD2	370	0.84
37	44.5	280 S	735	481	88.8	89.7	89.7	0.81	74	2.1	5	2.1	54	68	1LE1502-2DD0	460	1.22
45	54	280 M	735	585	89.2	90.3	90.4	0.81	90	2.1	5.3	2.1	58	71	1LE1502-2DD2	500	1.42
55	66	315 S	740	710	89.7	90.1	89.7	0.8	111	2.1	5.7	2.6	69	83	1LE1502-3AD0	640	2
75	90	315 M	738	970	90.3	90.7	90.5	0.81	148	2.3	5.9	2.7	69	84	1LE1502-3AD2	720	2.5
90	108	315 L	738	1165	90.7	91.2	91.2	0.84	171	2.2	5.9	2.6	68	83	1LE1502-3AD4	840	3.1
110	132	315 L	740	1419	91.1	91.6	91.5	0.82	215	2.7	6.7	2.9	73	87	1LE1502-3AD5	1000	3.9
132	158	315 L	740	1703	91.5	91.9	91.6	0.81	255	2.9	7.2	3.3	75	89	1LE1502-3AD6	1080	4.5
Voltages ²⁾																	
50 Hz 230 VΔ/400 VY			60 Hz ¹⁾ 460 VY			Version			2 2			Order code			-		
50 Hz 400 VΔ/690 VY			60 Hz ¹⁾ 460 VΔ			Standard			3 4			-			-		
50 Hz 500 VY						Without additional charge			2 7			-			-		
50 Hz 500 VΔ						Without additional charge			4 0			-			-		
For other voltages ¹⁾ and more information, see from page 2/92									9 0			...					
Types of construction																	
Without flange			IM B3 ³⁾			Standard			A			-			-		
With flange			IM B5 ³⁾			With additional charge			F			-			-		
With flange			IM B14 ³⁾			With additional charge			K			-			-		
For other types of construction and more information, see from page 2/99												...					
Motor protection																	
Without						Standard			A			-			-		
PTC thermistor with 3 temperature sensors						With additional charge			B			-			-		
For other motor protection and more information, see from page 2/108												...					
Terminal box position																	
Terminal box at top						Standard			4								
For other terminal box positions and more information, see from page 2/111																	
Special versions																	
Forced-air cooled motors w/o ext. fan/fan cover (IC 418)															1LE1502-... -Z F90 +...+...+...		
For options, see from page 2/120															1LE1502-... -Z ...+...+...+...		

1) Operating values at rated power for 60 Hz are stored in the Drive Technology Configurator (DT Configurator; see Appendix, "Tools and engineering").

2) Parallel supply lines are required in the case of connection to ≤ 240 V. For frame size 315 with connection to ≤ 240 V, due to the high current, a drilled, removable entry plate (order code R52) or a larger terminal box (order code R50) can be used. Order codes R52 and R50 alter the motor dimensions.

3) Types derived from IM B3 (IM B6/7/8, IM V6 and IM V5), from IM B5 (IM V3 and IM V1) and from IM B14 (IM V19 and IM V18) are possible, provided that no requirement exists for stamping of the type on the rating plate. The basic type IM B3, IM B5 or IM B14 is stamped as standard on the rating plate. If mounted in a different position, the position must be specified to ensure that the condensation drainage holes are positioned correctly.

4) The noise limit values specified as permissible in IEC 60034-9 under load can be exceeded.

ابعاد و اندازه الکتروموتورهای زمینس پوسته چدن از فریم 71 تا 160 ال

Dimensions

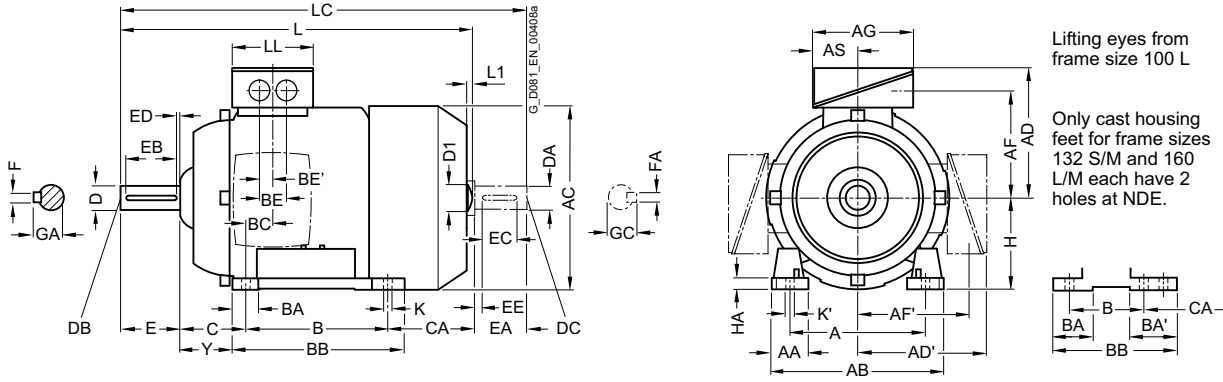
SIMOTICS SD 1LE1 standard motors

Cast-iron series, self-ventilated – IE1, IE2, NEMA Energy Efficient · Frame sizes 71 M to 160 L

Dimensional drawings

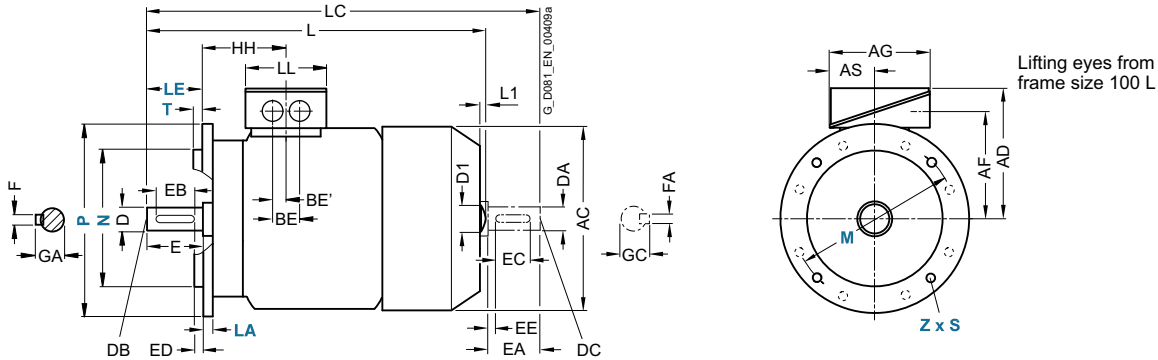
توجه: ابعاد و اندازه در سری قدیمی و سری جدید مشابه یکدیگرند و فقط تفاوت در شکل ظاهری کاسه عقب (بادگیر فن) و جعبه برقی (درپ تخته کلمپ) می باشد (GP 1LA7 & 1LE1)

Type of construction IM B3



Types of construction IM B5 and IM V1

For flange dimensions, see page 1/46 (Z = the number of retaining holes)



For motor			Dimension designation acc. to IEC																					
Frame size	Motor type	No. of poles	A	AA	AB	AC	AD	AD'	AF	AF'	AG	AS	B	BA	BA'	BB	BC	BE	BE'	C	CA	H	HA	Y
71 M	1LE15.1	2, 4, 6	112	30.5	132	145	149	149	112	112	126	62	90	32	32	106	21	36	18	45	83	71	7	37
80 M	1LE15.1	2, 4, 6	125	30.5	150	162	159	159	122	122	126	62	100	32	32	118	22.5	36	18	50	112.5	80	8	41
90 S	1LE15.1	2, 4, 6	140	30.5	165	180	164	164	127	127	126	62	100	33	54	143	24.5	36	18	56	159	90	11	47
90 L	1LE15.1	2, 4, 6	140	30.5	165	180	164	164	127	127	126	62	125	33	54	143	24.5	36	18	56	134	90	11	47
100 L	All	2, 4, 6, 8	160	42	196	217	193	193	147	147	163	80.5	140	48	48	176	37.5	48	24	63	141	100	12	45
112 M	All	2, 4, 6, 8	190	46	226	239	195	195	150	150	163	80.5	140	48	48	176	30	48	24	70	130	112	12	52
132 S	All	2, 4, 6, 8	216	53	256	281	214.5	214.5	169	169	163	80.5	140	52 ⁵⁾	89 ¹⁾	218 ³⁾	26.5	48	24	89	166.5	132	15	69
132 M	All	2, 4, 6, 8	216	53	256	281	214.5	214.5	169	169	163	80.5	178	52 ⁵⁾	89 ¹⁾	218	26.5	48	24	89	128.5	132	15	69
160 M	All	2, 4, 6, 8	254	60	300	333.5	265	265	213	213	190	92	210	73 ⁶⁾	117 ²⁾	300 ⁴⁾	37	60	30	108	192	160	18	85
160 L	All	2, 4, 6, 8	254	60	300	333.5	265	265	213	213	190	92	254	73 ⁶⁾	117 ²⁾	300	37	60	30	108	148	160	18	85

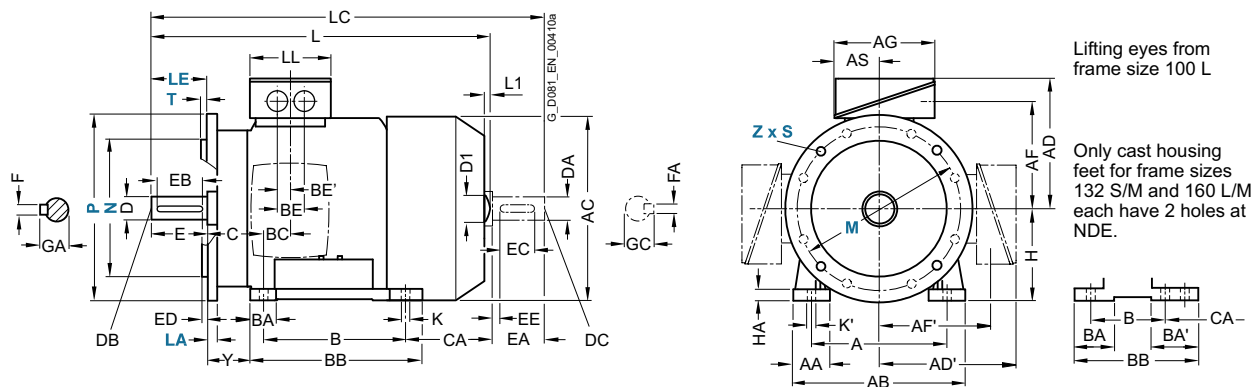
1) With screwed-on feet, dimension BA' is 41 mm.
 2) With screwed-on feet, dimension BA' is 51 mm.
 3) With screwed-on feet, dimension BB is 180 mm.

4) With screwed-on feet, dimension BB is 256 mm.
 5) With screwed-on feet, dimension BA is 41 mm.
 6) With screwed-on feet, dimension BA is 51 mm.

توجه: ابعاد و اندازه در سری قدیمی و سری جدید مشابه یکدیگرند و فقط تفاوت در شکل ظاهری کاسه عقب (بادگیر فن) و جعبه برقی (درپ تخنه کلمپ) (GP 1LA7 & 1LE1) می باشد

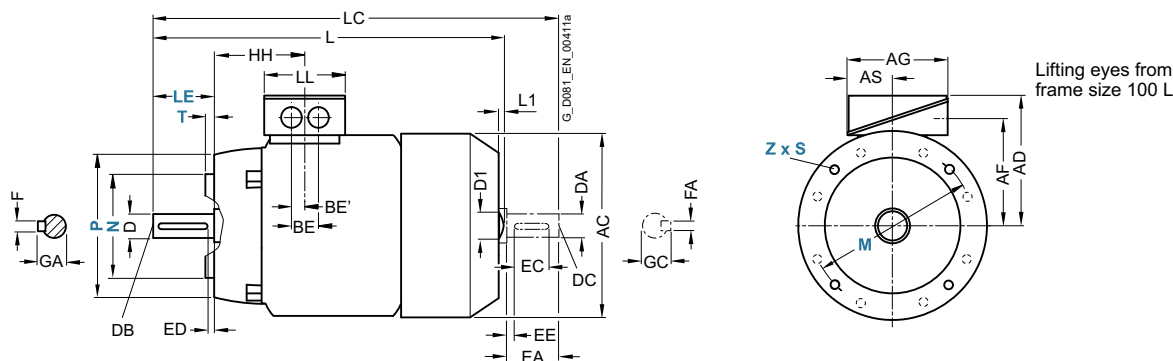
Dimensional drawings (continued) (درپ تخنه کلمپ)

Type of construction IM B35
For flange dimensions, see page 1/46 (Z = the number of retaining holes)



Type of construction IM B14

For flange dimensions, see page 1/46 (Z = the number of retaining holes)



For motor			Dimension designation acc. to IEC							DE shaft extension					NDE shaft extension									
Frame size	Motor type	No. of poles	HH	K	K'	L ¹⁾	L1 ²⁾	D1	LC	LL	D	DB	E	EB	ED	F	GA	DA	DC	EA	EC	EE	FA	GC
71 M	1LE15.1	2, 4, 6	64.5	7.5	7.5	240	-	-	278	102	14	M5	30	22	4	5	16	14	M5	30	22	4	5	16
80 M	1LE15.1	2, 4, 6	71.5	10	10	292	-	-	342.5	102	19	M6	40	32	4	6	21.5	19	M6	40	32	4	6	21.5
90 S	1LE15.1	2, 4, 6	79.5	10	10	347	-	-	405	102	24	M8	50	40	5	8	27	19	M6	40	32	4	6	21.5
90 L	1LE15.1	2, 4, 6	79.5	10	10	347	-	-	405	102	24	M8	50	40	5	8	27	19	M6	40	32	4	6	21.5
100 L	All	2, 4, 6, 8	100.5	12	16	397.5	7	32	454	134	28	M10	60	50	5	8	31	24	M8	50	40	5	8	27
112 M	All	2, 4, 6, 8	100.5	12	16	390.5 415.5	7	32	450 475	134	28	M10	60	50	5	8	31	24	M8	50	40	5	8	27
132 S	All	2, 4, 6, 8	115.5	12	16	466.5	8.5	39	535.5	134	38	M12	80	70	5	10	41	28	M10	60	50	5	8	31
132 M	All	2, 4, 6, 8	115.5	12	16	466.5	8.5	39	535.5	134	38	M12	80	70	5	10	41	28	M10	60	50	5	8	31
160 M	All	2, 4, 6, 8	145	14.5	18	606	10	45	730	165	42	M16	110	90	10	12	45	42	M16	110	90	10	12	45
160 L	All	2, 4, 6, 8	145	14.5	18	606	10	45	730	165	42	M16	110	90	10	12	45	42	M16	110	90	10	12	45

1) For 1LE16 motors less dimension L1.
2) Only for 1LE15 motors.



ابعاد و اندازه الکتروموتورهای زیمنس پوسته چدن از فریم 180 تا 250 ام

Dimensions

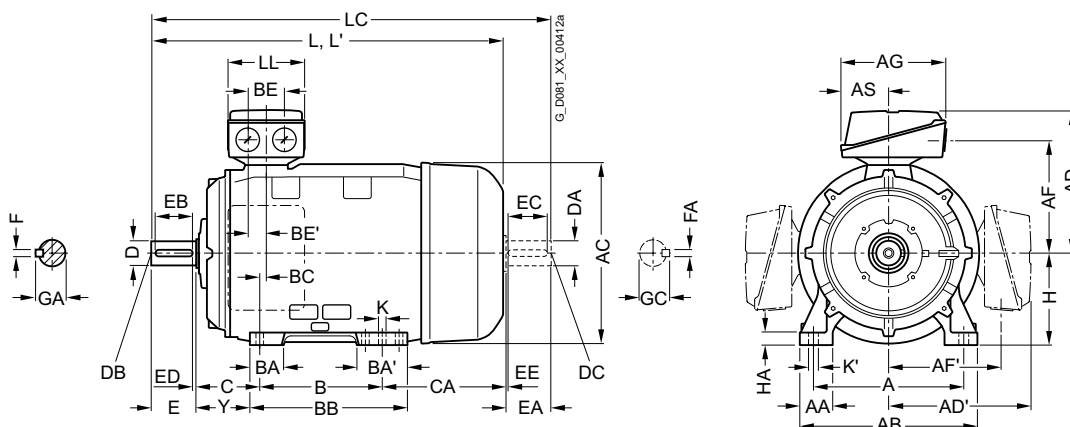
SIMOTICS SD 1LE1 standard motors

Cast-iron series, self-ventilated – IE1, IE2, NEMA Energy Efficient · Frame sizes 180 M to 250 M

توجه: ابعاد و اندازه در سری قدیمی و سری جدید مشابه یکدیگرند و فقط تفاوت در شکل ظاهری کاسه عقب (بادگیر فن) و جعبه برقی (درپ نخسته کلمپ) می باشد (GP 1LA7 & 1LE1)

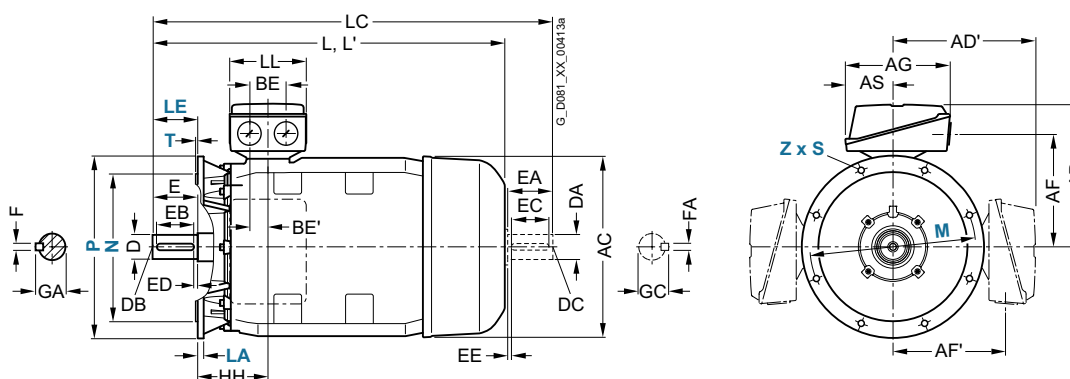
Dimensional drawings

Type of construction IM B3



Types of construction IM B5 and IM V1

For flange dimensions, see page 1/46 (Z = the number of retaining holes)



For motor			Dimension designation acc. to IEC																		
Frame size	Motor type	No. of poles	A	AA	AB	AC	AD	AD'	AF	AF'	AG	AS	B	BA	BA'	BB	BC	BE	BE'	C	CA
180 M/ 180 L	1LE1501-, 1LE1521-, 1LE1541- 1LE1601- 1LE1502-	2, 4, 6	279	65	339	356	286	286	234	234	189	91	241	85	120	328	34	60	30	121	202
	1EB4, 1EA6, 1EB6, 1EC6	2, 4, 6											279								
200 L	2AA4, 2AA5, 2AB5, 2AC4, 2AC5, 2AD5	2, 4, 6, 8	318	70	378	396	315	315	258.5	258.5	265	112	305	104	104	355	31	85	42.5	133	177
	2AA6, 2AB6, 2AC6, 2AD6	2, 4, 6, 8																			
225 S/ 225 M	2BB0, 2BD0,	4, 8	356	80	436	449	338	338	282	282	266	112	311	92	117	361	15	85	42.5	149	253
	2BB2, 2BC2, 2BD2, 2BB6, 2BC6, 2BD6	4, 6, 8											286 ¹⁾								
	2BA2, 2BA6	2											286 ¹⁾								
250 M	2CA2, 2CA6	2	406	100	490	497	410	410	322	322	319	145	349	102	102	409	24	110	55	168	230
	2CB2, 2CC2, 2CD2, 2CC6, 2CD6,	4, 6, 8																			
	2CB6	4																			

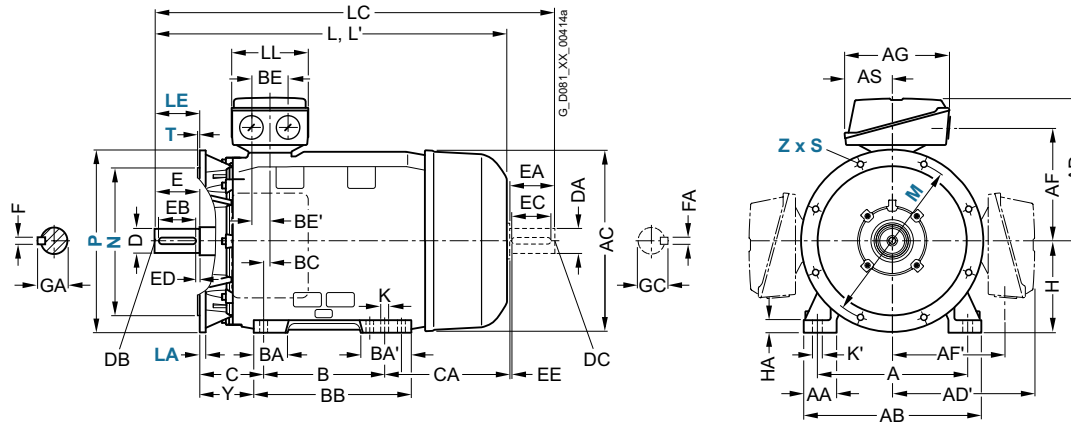
300

¹⁾ Only applicable for 1LE1502.

توجه: ابعاد و اندازه در سری قدیمی و سری جدید مشابه یکدیگرند و فقط تفاوت در، شکل ظاهری کاسه عقب (بادگیر فن) و جعبه برق (درپ تخنه کلمپ) (درپ تخنه کلمپ) (GP 1LA7 & 1LE1) می باشد

Dimensional drawings (continued) (درپ تخنه کلمپ)

Type of construction IM B35
For flange dimensions, see page 1/46 (Z = the number of retaining holes)



For motor Motor type 1LE1501-, 1LE1521-, 1LE1541- 1LE1601- 1LE1502-	Dimension designation acc. to IEC							DE shaft extension						NDE shaft extension									
	H	HA	Y	HH	K	K'	L	LC ¹⁾	LL	D	DB	E	EB	ED	F	GA	DA	DC	EA	EC	EE	FA	GC
1EB2 ²⁾ , 1EA2, 1EB2, 1EC4	180	20	95	155	15	19	668	784	164	48	M16	110	100	5	14	51.5	48	M16	110	100	5	14	51.5
1EB4, 1EA6, 1EB6, 1EC6							698	814															
2AA4, 2AA5, 2AB5, 2AC4, 2AC5, 2AD5	200	25	108	164	19	25	721	835	197	55	M20	110	100	5	16	59	55	M20	110	100	5	16	59
2AA6, 2AB6, 2AC6, 2AD6							746	860															
2BB0, 2BD0	225	34	124	164	19	25	788	903	197	60	M20	140	125	10	18	64	55	M20	110	100	5	16	59
2BB2, 2BC2, 2BD2, 2BB6, 2BC6, 2BD6							848	963															
2BA2, 2BA6							818	933	55			110	100	5	16	59	48	M16				14	51.5
2CA2, 2CA6	250	40	138	192	24	30	887	1002	233	60	M20	140	125	10	18	64	55	M20	110	100	5	16	59
2CB2, 2CC2, 2CD2, 2CC6, 2CD6							1032	1072	65						69	60			140	125	10	18	64
2CB6							957	1072															

¹⁾ In the low-noise version, a second shaft extension and/or mounted encoder is not possible.

²⁾ Only applicable for 1LE1502.

ابعاد و اندازه الکتروموتورهای زمینس پوسته چدن از فریم 280 اس تا 315 ال

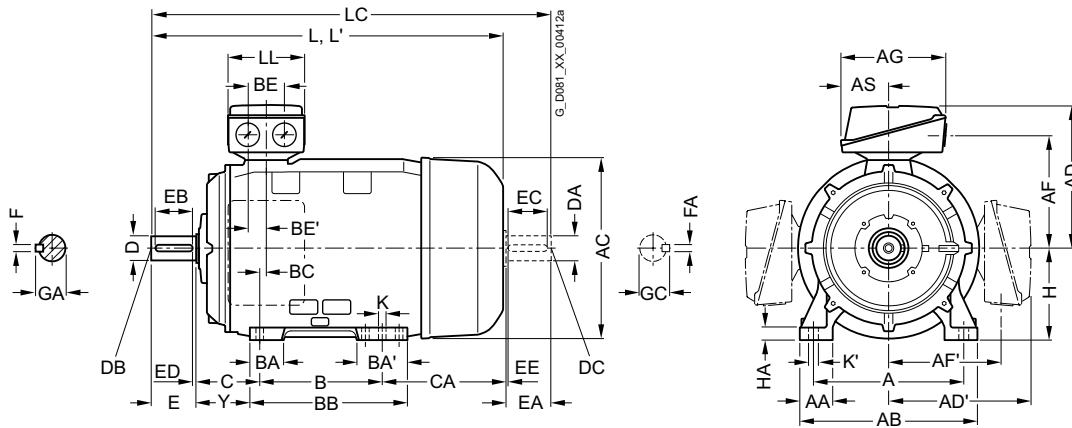
Dimensions

SIMOTICS SD 1LE1 standard motors

Cast-iron series, self-ventilated – IE1, IE2, NEMA Energy Efficient · Frame sizes 280 S to 315 L

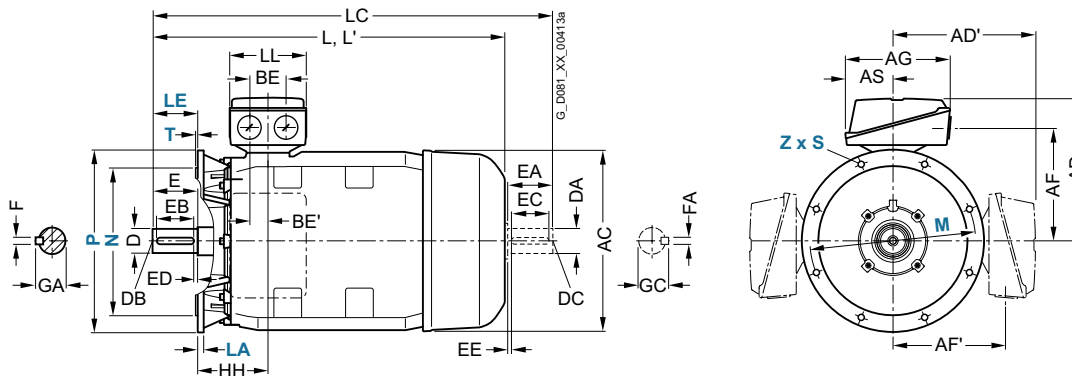
Dimensional drawings توجه: ابعاد و اندازه در سری قدیمی و سری جدید مشابه یکدیگرند و فقط تفاوت در شکل ظاهری کاسه عقب (بادگیر فن) و جعبه برق (در ب تخته کلمپ) می باشد (GP 1LA7 & 1LE1)

Type of construction IM B3



Types of construction IM B5 and IM V1

For flange dimensions, see page 1/46 (Z = the number of retaining holes)



For motor			Dimension designation acc. to IEC																		
Frame size	Motor type	No. of poles	A	AA	AB	AC	AD	AD'	AF	AF'	AG	AS	B	BA	BA'	BB	BC	BE	BE'	C	CA
280 S	2DA0	2	457	100	540	551	433	433	345	345	319	145	368	101	152	479	20	110	55	190	267
	2DB0, 2DC0, 2DD0	4, 6, 8																			267
280 M	2DA6	2											419								326
	2DA2	2																			216
	2DB2, 2DC2, 2DD2, 2DC6, 2DD6	4, 6, 8																			
315 S	3AA0, 3AA2 ²⁾	2	508	120	610	616	515	515	404	404	374	164	406	113	170	527	22	110	55	216	295
	3AB0, 3AC0, 3AD0	4, 6, 8																			
315 M	3AA2 ¹⁾ , 3AA5 ²⁾	2											457			578					409
	3AB2 ¹⁾	4																			
	3AC2, 3AD2	6, 8																			
315 L ¹⁾	3AA4	2											508			578					358
	3AB4, 3AC4, 3AD4, 3AC5, 3AD5, 3AD6	4, 6, 8																			
	3AA5, 3AA6	2											508	176	227	648					
	3AB5, 3AC6	4, 6																			

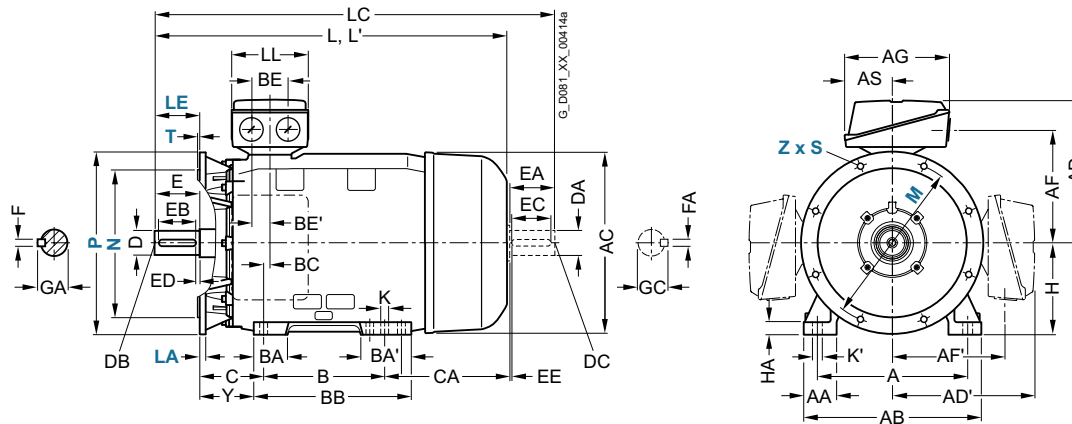
¹⁾ For orders with screwed-on feet (order code **H01**), these screwed-on feet have 3 drilled holes on the NDE side with the dimension B 406 mm, 457 mm, and 508 mm respectively; the dimension BB is 666 mm.

²⁾ Only applicable for 1LE1502.

توجه: ابعاد و اندازه در سری قدیمی و سری جدید مشابه یکدیگرند و فقط تفاوت در، شکل ظاهری کاسه عقب (بادگیر فن) و جعبه برقی (درپ نخسته کلمپ) (درپ نخسته کلمپ) می باشد (GP 1LA7 & 1LE1)

Dimensional drawings (continued) *Type of construction IM B35*

For flange dimensions, see page 1/46 (Z = the number of retaining holes)



For motor	Dimension designation acc. to IEC							DE shaft extension							NDE shaft extension									
Motor type	H	HA	Y	HH	K	K'	L	LC ¹⁾	LL	D	DB	E	EB	ED	F	GA	DA	DC	EA	EC	EE	FA	GC	
1LE1501-, 1LE1521-, 1LE1541- 1LE1601- 1LE1502-																								
2DA0	280	40	160	210	24	30	960	1105	233	65	M20	140	125	10	18	69	60	M20	140	125	10	18	64	
2DB0, 2DC0, 2DD0										75					20	79.5	65						69	
2DA6							1070	1215		65					18	69	60						64	
2DA2							960	1105																
2DB2, 2DC2, 2DD2, 2DC6, 2DD6										75					20	79.5	65						69	
2DB6							1070	1215																
3AA0, 3AA2 ²⁾	315	50	181	238	28	35	1052	1197	299	65	M20	140	125	10	18	69	60	M20	140	125	10	18	64	
3AB0, 3AC0, 3AD0							1082	1227		80		170	140	25	22	85	70						20	74.5
3AA2, 3AA5 ²⁾							1217	1362		65		140	125	10	18	69	60						18	64
3AB2							1247	1392		80		170	140	25	22	85	70						20	74.5
3AC2, 3AD2							1082	1227																
3AA4							1217	1362		65		140	125	10	18	69	60						18	64
3AB4, 3AC4, 3AD4, 3AC5, 3AD5, 3AD6							1247	1392		80		170	140	25	22	85	70						20	74.5
3AA5, 3AA6					146		1372	1517		65		140	125	10	18	69	60						18	64
3AB5, 3AC6							1402	1547		80		170	140	25	22	85	70						20	74.5

¹⁾ In the low-noise version, a second shaft extension and/or mounted encoder is not possible. ²⁾ Only applicable for 1LE1502.